

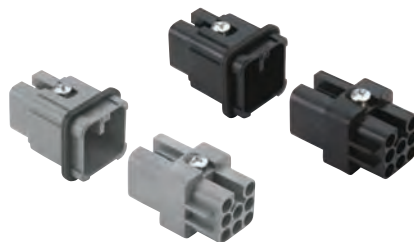
enclosures:

size "21.21"

page:

insulating type 123 - 124

inserts, crimp connections



**10A crimp contacts
tin and gold plated**



description	part No.	part No.	part No.	part No.
without contacts (to be ordered separately) female inserts for female contacts, grey and black ¹⁾ male inserts for male contacts, grey and black	grey CDF 07 CDM 07	black CDF 07 N CDM 07 N		
10A female contacts 0,14-0,37 mm ² AWG 26-22 identification No. 1 0,5 mm ² AWG 20 identification No. 2 0,75 mm ² AWG 18 identification No. ② 1 mm ² AWG 18 identification No. 3 1,5 mm ² AWG 16 identification No. 4 2,5 mm ² AWG 14 identification No. 5			tin plated CDFS 0.3 CDFS 0.5 CDFS 0.7 CDFS 1.0 CDFS 1.5 CDFS 2.5	gold plated CDFJD 0.3 CDFJD 0.5 CDFJD 0.7 CDFJD 1.0 CDFJD 1.5 CDFJD 2.5
10A male contacts 0,14-0,37 mm ² AWG 26-22 identification No. 1 0,5 mm ² AWG 20 identification No. 2 0,75 mm ² AWG 18 identification No. ② 1 mm ² AWG 18 identification No. 3 1,5 mm ² AWG 16 identification No. 4 2,5 mm ² AWG 14 identification No. 5			tin plated CDMS 0.3 CDMS 0.5 CDMS 0.7 CDMS 1.0 CDMS 1.5 CDMS 2.5	gold plated CDMJD 0.3 CDMJD 0.5 CDMJD 0.7 CDMJD 1.0 CDMJD 1.5 CDMJD 2.5

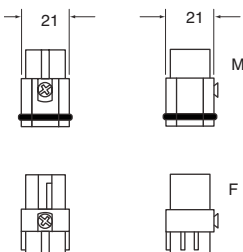
¹⁾ the female inserts can be mounted into the straight bulkhead housings CK I from the rear

- characteristics according to EN 61984:

10A 250V 4kV 3
10A 230/400V 4kV 2

- insulation resistance: ≥ 10 GΩ
- ambient temperature limit: -40 °C ... +125 °C
- are made of self-extinguishing thermoplastic resin UL 94 V0
- mechanical life: ≥ 50 cycles (tin plated)
- mechanical life: ≥ 500 cycles (gold plated)
- contact resistance: ≤ 3 mΩ
- for applications requiring higher voltages, please see the special voltage application section on page 30
- for contact crimping instructions, please see the crimping tool section (10A contacts, CDF and CDM series) on page 149
- for maximum current load, see the following load curves inserts, for more information see page 150

dimensions in mm



contacts side (front view)



coding pin with loss of a contact CR CP



dimensions in mm

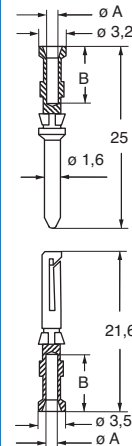
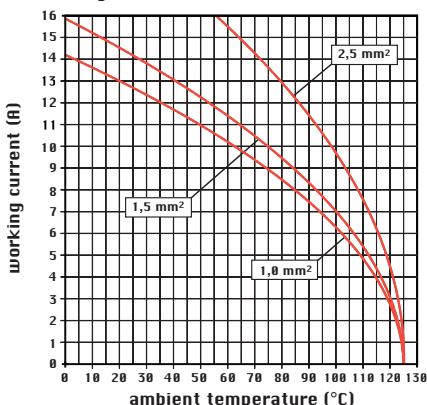


diagram CD 07 poles



dimensions shown are not binding and may be changed without notice

CDF and CDM contacts

conductor section mm ²	conductor slot ø A (mm)	conductors stripping length B (mm)
0.14-0.37	0.9	8
0.5	1.1	8
0.75	1.3	8
1.0	1.45	8
1.5	1.8	8
2.5	2.2	6

WARNING:

Do not use tin plated crimp contacts coupled with gold plated crimp contacts.

enclosures:

size "44.27"

page:

JEI®-P thermoplastic lever 92 - 93

JEI®-V zinc-plated steel lever 102 - 104

T-TYPE IP65 insulating 134 - 135

panel supports:

page:

COB 143 - 144

inserts, crimp connections

**16A crimp contacts
tin and gold plated**


description

part No.

part No.

part No.

without contacts (to be ordered separately)

female inserts for female contacts

male inserts for male contacts

**CCEF 06
CCEM 06**
16A female contacts

0,14-0,37 mm ²	AWG 26-22	three grooves
0,5 mm ²	AWG 20	with no grooves
0,75 mm ²	AWG 18	one groove (back side)
1 mm ²	AWG 18	one groove
1,5 mm ²	AWG 16	two grooves
2,5 mm ²	AWG 14	three grooves
3 mm ²	AWG 12	one wide groove
4 mm ²	AWG 12	with no grooves

16A male contacts

0,14-0,37 mm ²	AWG 26-22	three grooves
0,5 mm ²	AWG 20	with no grooves
0,75 mm ²	AWG 18	one groove (back side)
1 mm ²	AWG 18	one groove
1,5 mm ²	AWG 16	two grooves
2,5 mm ²	AWG 14	three grooves
3 mm ²	AWG 12	one wide groove
4 mm ²	AWG 12	with no grooves

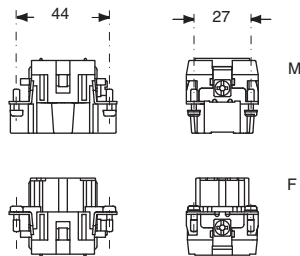
**CCFS 0.3
CCFS 0.5
CCFS 0.7
CCFS 1.0
CCFS 1.5
CCFS 2.5
CCFS 3.0
CCFS 4.0**
tin plated
**CCFJD 0.3
CCFJD 0.5
CCFJD 0.7
CCFJD 1.0
CCFJD 1.5
CCFJD 2.5
CCFJD 3.0
CCFJD 4.0**
gold plated
**CCMS 0.3
CCMS 0.5
CCMS 0.7
CCMS 1.0
CCMS 1.5
CCMS 2.5
CCMS 3.0
CCMS 4.0**
**CCMJD 0.3
CCMJD 0.5
CCMJD 0.7
CCMJD 1.0
CCMJD 1.5
CCMJD 2.5
CCMJD 3.0
CCMJD 4.0**

- characteristics according to EN 61984:

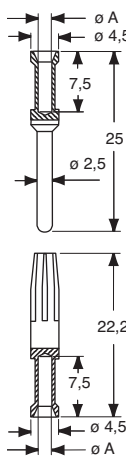
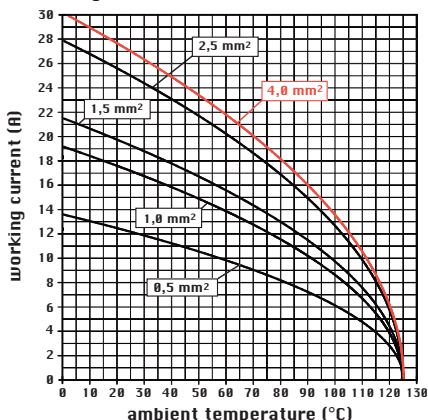
16A 500V 6kV 3
16A 400/690V 6kV 2

- insulation resistance: $\geq 10 \text{ G}\Omega$
- ambient temperature limit: $-40 \text{ }^\circ\text{C} \dots +125 \text{ }^\circ\text{C}$
- are made of self-extinguishing thermoplastic resin UL 94 V0
- mechanical life: ≥ 50 cycles (tin plated)
- mechanical life: ≥ 500 cycles (gold plated)
- contact resistance: $\leq 1 \text{ m}\Omega$
- for contact crimping instructions, please see the crimping tool section (16A contacts, CCF, CCM series) on page 149
- for maximum current load, see the following load curves inserts, for more information see page 150

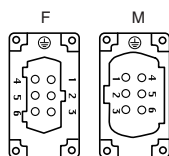
dimensions in mm



dimensions in mm


diagram CCE 06 poles


contacts side (front view)



coding pin with loss of a contact CR CPQ


CCF, CCM contacts

conductor section mm ²	conductor slot ø A (mm)	conductors stripping length (mm)
0,14+0,37	0,9	7,5
0,5	1,1	7,5
0,75	1,3	7,5
1,0	1,45	7,5
1,5	1,8	7,5
2,5	2,2	7,5
3	2,55	7,5
4	2,85	7,5

WARNING:

Do not use tin plated crimp contacts coupled with gold plated crimp contacts.

 dimensions shown are not binding
and may be changed without notice