

inserts:		page:
CK	3 poles + ⊕	48 *
CK	4 poles + ⊕	48 *
CKS	3 poles + ⊕	49 *
CKS	4 poles + ⊕	49 *
CKSH	3 poles + ⊕	7
CKSH	4 poles + ⊕	7
CD	8 poles	54 *
CQ4	3 poles + ⊕	23 **
CQ	5 poles + ⊕	166 *
CQ	7 poles + ⊕	8
CQ	12 poles + ⊕	102
CQ	21 poles + ⊕	11

* refer to catalogue page CN.16
 ** refer to catalogue page News 2016

insert dimensions:
 21 x 21 mm

hoods



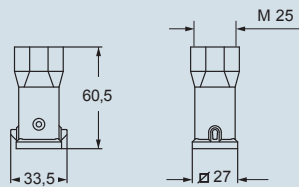
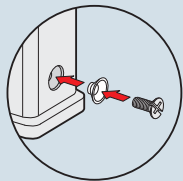
**AVAILABLE
 MAY 2017**

description	part No. (entry - M 25)
with pegs, top entry	MKAW V25
gasket and screw kit for IP66/IP67 ¹⁾ for CK, CQ 05, CKS inserts	CKR 65
gasket and screw kit for IP66/IP67 ¹⁾ for CD 08 inserts	CKR 65 D

1) To obtain the protection rating IP66/IP67 a kit is provided that includes a gasket to fit under the insert fixing screws supplied with the kit (see illustrative example).
 CQ 12 inserts are already supplied with a gasket and screw which ensure IP66/IP67 protection rating.

dimensions in mm

MKAW V25



IP66/IP67 with CKR 65 (D) ¹⁾

dimensions shown are not binding
 and may be changed without notice