



inserts:	page:
CDD 42 poles + ⊕	69
CDS 18 poles + ⊕	79
CSH 10 poles + ⊕	92
CNE, CSE 10 poles + ⊕	105
CCE 10 poles + ⊕	111
CSS 10 poles + ⊕	123
CQE 18 poles + ⊕	139
CMCE 3+2 (aux) poles + ⊕	148
CMSH 3+2 (aux) poles + ⊕	149
CX 8/24 poles + ⊕	169
MIXO 3 modules	179 - 215

insert centre distance:
57 x 27 mm

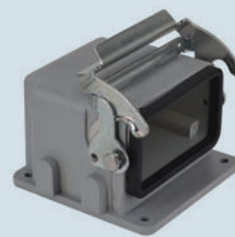
angled bulkhead mounting housings
with single lever



lever in stainless steel

NEW

angled bulkhead mounting housings
with single lever



lever in stainless steel

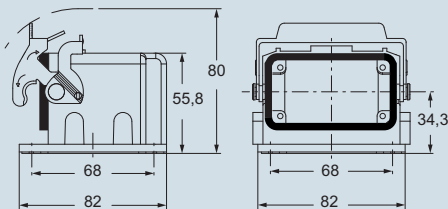
NEW

description	part No.	part No.	entry M
with lever, without cable gland entry ^{1) 3)}	CVI 10 LA		
with lever, with cable gland entry, closed bulkhead ²⁾		MVI 10 LAP32	32

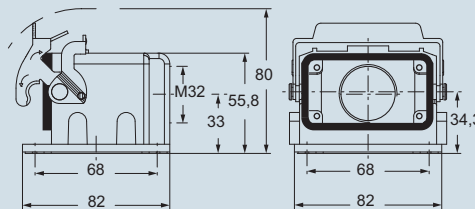
¹⁾ Flange gasket to be purchased separately.
part No.: **CR 10 MO**.



dimensions in mm



dimensions in mm



- ²⁾ Be used only with a complete cable gland (to be purchased separately).
Versions with M25 or Pg 21 entry on request.
- ³⁾ Kit with earthing contact, comprising a special screw and wire-terminals for 6 mm² earthing conductors (for the additional connection of the upper enclosure half) part No.: **CR MOT**



N.B.:
The enclosures ensure IP66 protection rating when mated and locked with the closing lever.

Following flange versions available on request:
73 x 73, 78 x 78, 80 x 80, 98 x 98 mm



dimensions shown are not binding
and may be changed without notice

V-TYPE - size 57.27