

enclosures:

MIXO seriesfrom page 180

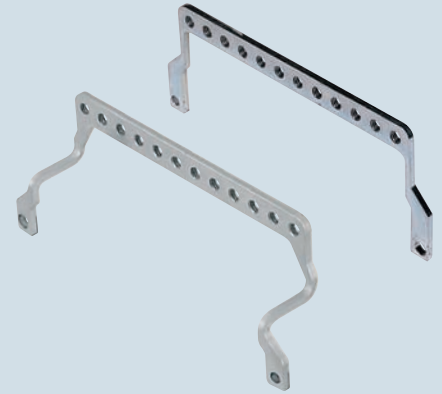
CX 01 YF/YM/YPEF/YPEM, CX 02 GF/M, CX 02 HF/M:
only with CR 24 ATD

N.B.:
size 44.27 and 57.27 cannot be used with T-TYPE series

ground terminals for shielded cables (for MIXO series)
clamps for cables Ø 5 mm and Ø 10 mm



anchorages for several earth connections cables (for MIXO series)



description	part No.	part No.
in zinc iron, to be mounted on MIXO frames in bulkhead mounting housings and high construction hoods - enclosures "44.27" and MIXO frames for 2 inserts - enclosures "57.27" and MIXO frames for 3 inserts - enclosures "77.27", "77.62" and MIXO frames for 4 inserts - enclosures "104.27", "104.62" and MIXO frames for 6 inserts	CR 06 ST CR 10 ST CR 16 ST CR 24 ST	
to be mounted on CR..ST ground terminals clamp for shielding cables Ø 5 mm clamp for shielding cables Ø 10 mm	CR 05 CA CR 10 CA	
in zinc iron, to be mounted on MIXO frames in bulkhead mounting housings and high construction hoods - enclosures "44.27" and MIXO frames for 2 inserts - enclosures "57.27" and MIXO frames for 3 inserts - enclosures "77.27", "77.62" and MIXO frames for 4 inserts - enclosures "104.27", "104.62" and MIXO frames for 6 inserts - enclosures "104.27", "104.62" and MIXO frames for 6 inserts		CR 06 AT CR 10 AT CR 16 AT CR 24 AT CR 24 ATD

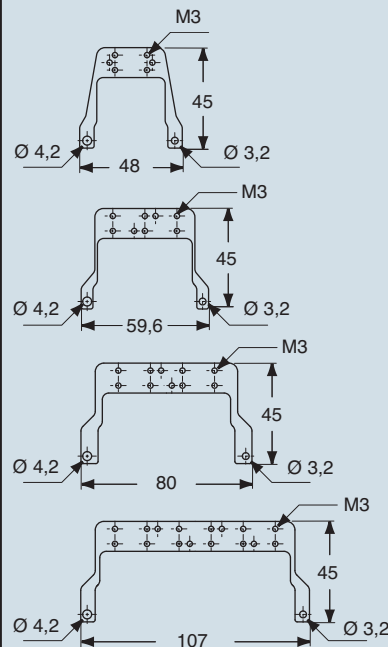
Anchorage CR .. ST are designed for installation on the frames of the MIXO modular connectors, for earth connecting the screening braid of shielded cables.

With the CR..ST anchorages we advise you to use high construction hoods top entry.

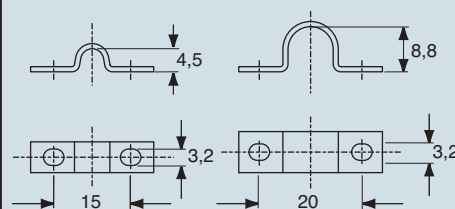
Anchorage CR .. AT / ATD are designed for installation on the frames of the MIXO modular connectors for earth connecting several cables.

dimensions in mm

CR...ST

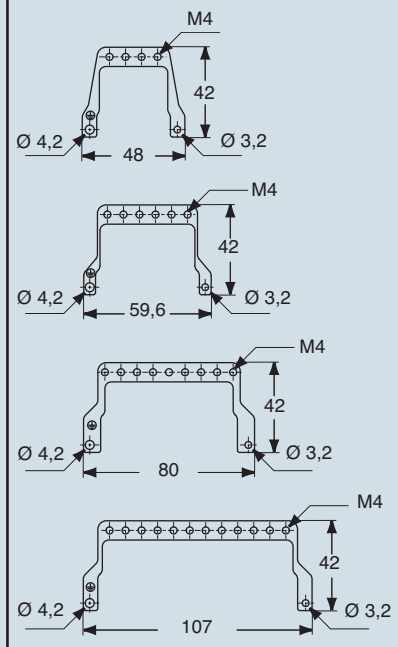


CR...CA

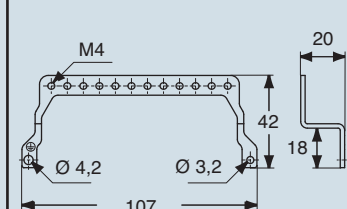


dimensions in mm

CR...AT



CR...ATD



dimensions shown are not binding and may be changed without notice

Accessories

inserts: page:

CD	40, 64 poles + ⊕	57 and 59
CDD	24, 42, 72, 108 poles + ⊕	67-72
CDS	9, 18, 27, 42 poles + ⊕	78-81
CSH	6, 10, 16, 24 poles + ⊕	91-94
CNE, CSE..	6, 10, 16, 24 poles + ⊕	104-107
CCE	6, 10, 16, 24 poles + ⊕	110-113
CSS	6, 10, 16, 24 poles + ⊕	122-125
CQE	10, 18, 32, 46 poles + ⊕	138-141
CQEE	40, 64 poles + ⊕	146-147
CMSH 3+2, 6+2, 10+2 (aux)	poles + ⊕	149-153
CP	6 poles + ⊕	162
CX	8/24, 6/36, 12/2 poles + ⊕	169-171

screw fixing centre distance:
44 x 27 mm, 57 x 27 mm,
77,5 x 27 mm, 104 x 27 mm

N.B.:
 size 44.27 and 57.27 cannot be used with T-TYPE series

ground terminals for shielded cables and for several earth connections clamps for cables Ø 5 mm and Ø 10 mm



description

part No.

in zinc plated iron, to be fitted on connectors in bulkhead housings, high hoods and COB series enclosures
 - "44.27" enclosures and inserts
 - "57.27" enclosures and inserts *
 - "77.27", "77.62" enclosures and inserts
 - "104.27", "104.62" enclosures and inserts
 - CSS "104.27" enclosures and inserts **

- CR 06 SC**
- CR 10 SC**
- CR 16 SC**
- CR 24 SC**
- CR 24 SCA**

to be fitted on CR..SC anchors
 U-bolt for Ø 5 mm cable screening
 U bolt for Ø 10 mm cable screening

- CR 05 CA**
- CR 10 CA**

* The high construction hoods with side entry cannot be used.

dimensions in mm

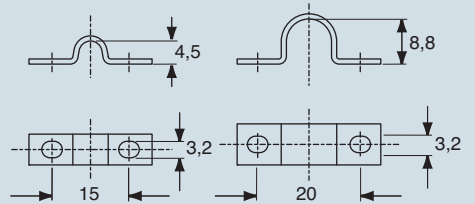
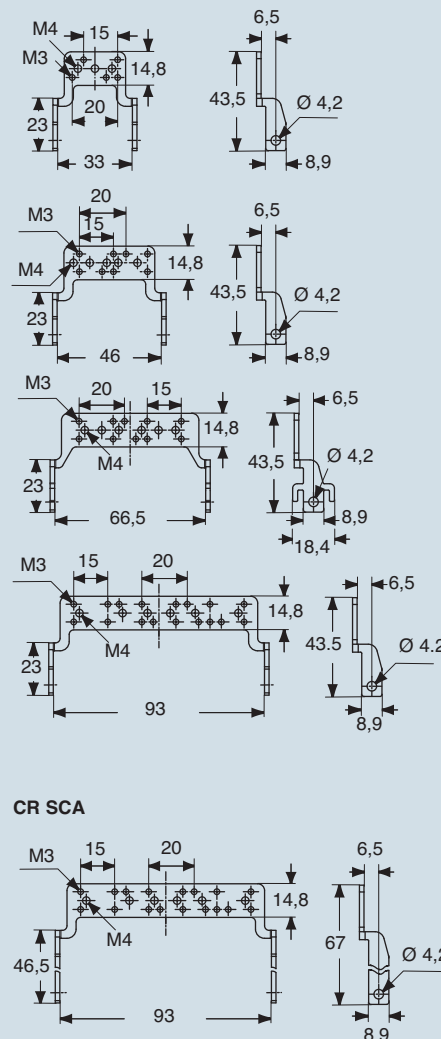
** Can be used only in bulkhead housings.

CR...SC

CR...CA

The CR... SC anchors are fitted on connectors for connecting to earth multiple cables and screened cables braids.

With the CR.SC anchorages, we advise you to use high construction hoods top entry.

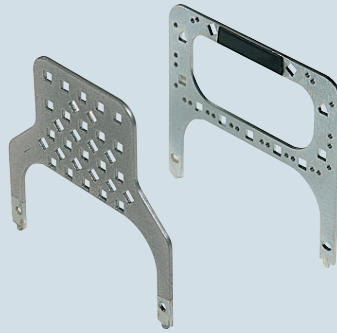


dimensions shown are not binding and may be changed without notice

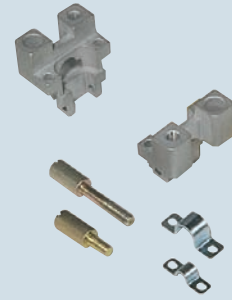
The CR..FS series anchorages are employed for use of connector inner fittings (normal or MIXO modular) without enclosures and enable securing cables with clamps to prevent transmitting friction forces to contacts. CR..SS anchorages (with grip to facilitate detachment) are used for earth connecting several conductors and/or of the screen of shielded cables.

* except CT, CTS and CTSE

grip panels for cables outside enclosure equipped with fixing screws and rings



supports, screws and clamps for grip panels of cables outside enclosure



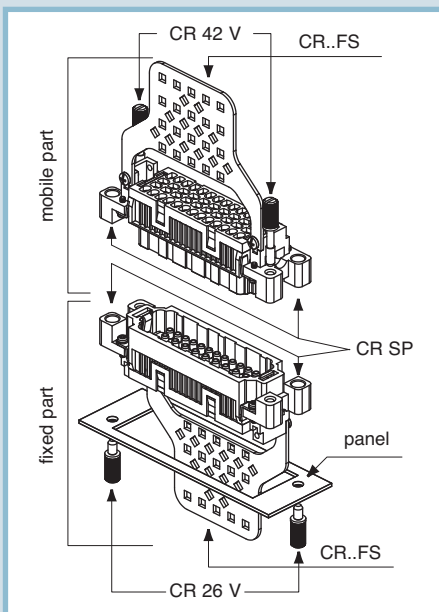
description	part No.	part No.
in zinc iron, to be mounted on: - inserts size "44.27" * and MIXO frames for 2 inserts - inserts size "57.27" * and MIXO frames for 3 inserts - inserts size "77.27" * and MIXO frames for 4 inserts - inserts size "104.27" * and MIXO frames for 6 inserts	CR 06 FS CR 10 FS CR 16 FS CR 24 FS	
for shielded cables, to be mounted on: - inserts size "77.27" * and MIXO frames for 4 inserts - inserts size "104.27" * and MIXO frames for 6 inserts	CR 16 SS CR 24 SS	
supports in die-cast zinc N° 2 pieces equipped with fixing screws and rings for earth connecting		CR SP
short screws in zinc iron, N° 2 pieces long screws in zinc iron, N° 2 pieces		CR 26 V CR 42 V
to be mounted on CR..SS anchorage clamp for shielding cables Ø 5 mm clamp for shielding cables Ø 10 mm		CR 05 CA CR 10 CA

* Except CT, CTS, and CTSE

In the fixed part, a pair of CR SP supports is fitted on the connector, using its securing screws. A CR..FS or CR..SS anchorage is fitted on the supports, using the supplied securing screws and washers. All parts are secured on the rear panel with the pair of CR 26 V viton screws.

In the mobile part too, a pair of CR SP supports are fitted on the connector and a CR..FS or CR..SS anchorage is secured on it. The pair of CR 42 V screws fasten the mobile part to the fixed part.

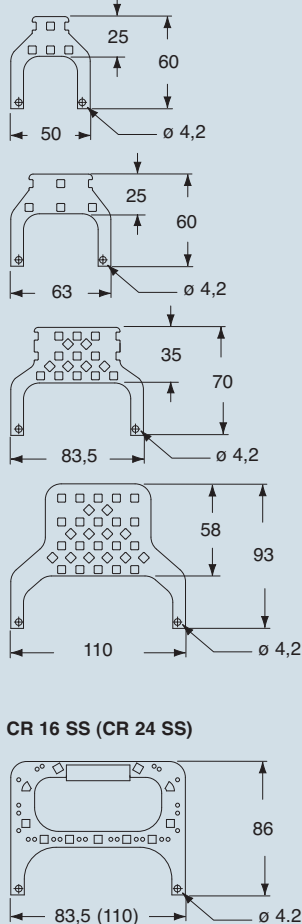
Note: By unscrewing the CR 26 V panel screws, the whole assembly (mobile part + fixed part) can be removed from the panel for inspection.



dimensions shown are not binding and may be changed without notice

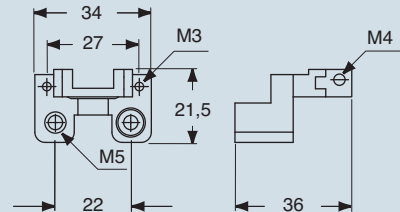
dimensions in mm

CR...FS

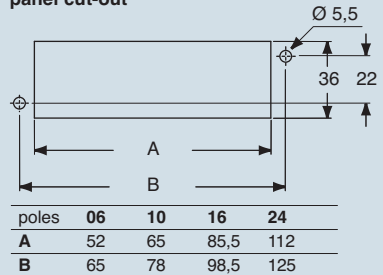


dimensions in mm

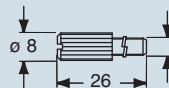
CR SP



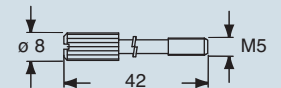
panel cut-out



CR 26 V



CR 42 V



CR...CA

