

Thermoplastic enclosures size “32.13” standard or EMC versions

SUM-UP

📌 For use with all size “32.13” connector inserts

🔧 Characteristics of materials

for CQ - MQ series

- In self-extinguishing grey RAL 7035 or jet black RAL 9005 thermoplastic material;
- gaskets in anti-aging, oil-resistant, grease-resistant and fuel-resistant NBR vinyl nitrile elastomer;
- with single-block locking lever in self-extinguishing thermoplastic material.

- ✓ UL certified for USA and Canada for Type 4, 4X and 12 degrees of protection (enclosure type ratings, equivalent to NEMA rating), printed on the packaging.

IP66/IP67/IP69 degree of protection.





CQ insulating version

inserts		page:
CQ 04/2	4 poles + 2 poles + ⊕	191
CQ 08	8 poles + ⊕	192
CQ 17	17 poles + ⊕	193

bulkhead mounting housings with single lever

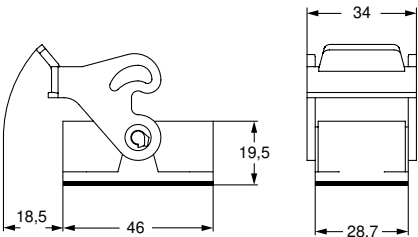


angled bulkhead mounting housings with single lever

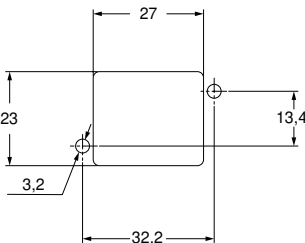


description	part No.	part No.	entry Pg
with lever	CQ 08 I	CQ 08 IA	
without cable entry, angled, with lever		CQ 08 IAP	21
with cable entry, angled, with lever			

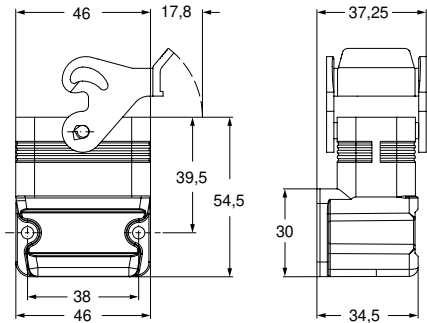
CQ I



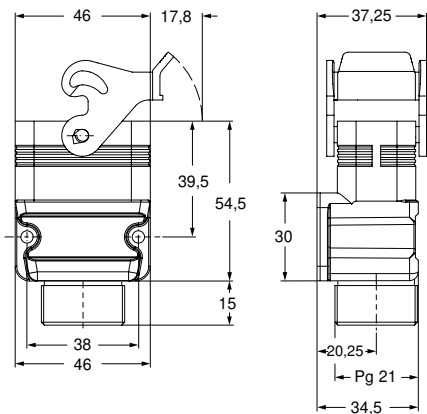
panel cut-out for CQ I enclosure



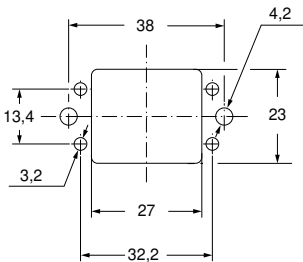
CQ IA




CQ IAP




panel cut-out for CQ IA - CQ IAP enclosure





Type 4/4X/12





CQ - MQ insulating version

inserts		page:
CQ 04/2	4 poles + 2 poles + ⊕	191
CQ 08	8 poles + ⊕	192
CQ 17	17 poles + ⊕	193

hoods with 2 pegs



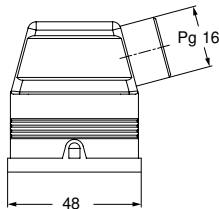
hoods with 2 pegs



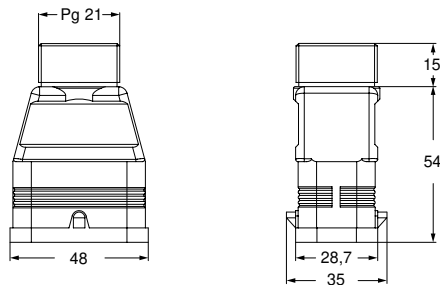
description	part No.	entry Pg	part No.	entry M
with pegs, side entry ¹⁾	CQ 08 VA	16		
with pegs, top entry ¹⁾	CQ 08 V	21		
with pegs, side and top entry ²⁾			MQ 08 VO225	25 x 2

- ¹⁾ Pg male thread on enclosure exterior
- ²⁾ metric thread on the internal enclosure;
accessories to be ordered separately:
- AL M25DN insulating black sealing plug M25
 - AL M25IN insulating black cable gland M25

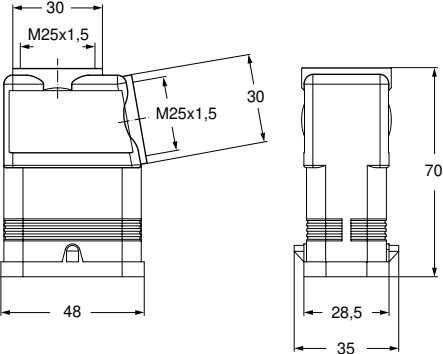
CQ VA



CQ V



MQ VO



CAUS® Type 4/4X/12
(pending for MQ 08 VO225)





inserts		page:
CQ 04/2	4 poles + 2 poles + ⊕	191
CQ 08	8 poles + ⊕	192
CQ 17	17 poles + ⊕	193

hoods with single lever



covers with 2 pegs
thermoplastic resin cable glands



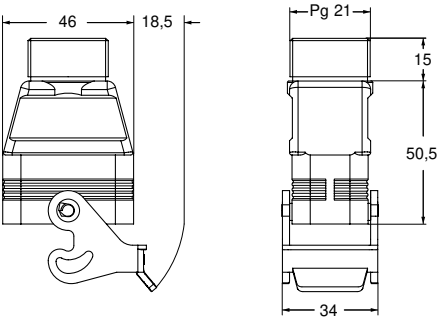
description	part No.	entry Pg	part No.
with lever, top entry 1)	CQ 08 VG	21	
cover with 2 pegs for female inserts			CQ 08 C
cover with 2 pegs for male inserts			CQ 08 CA
cable gland head and gasket for CQ 08 VA enclosure			CRQ 16
cable gland head and gasket for CQ 08 V and VG enclosure			CRQ 21

1) Pg male thread on enclosure exterior

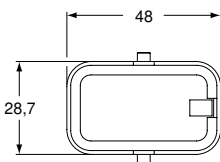
cable diameters for cable glands:

- CRQ 16: 10 - 14,5 mm
- CRQ 21: 14 - 18 mm

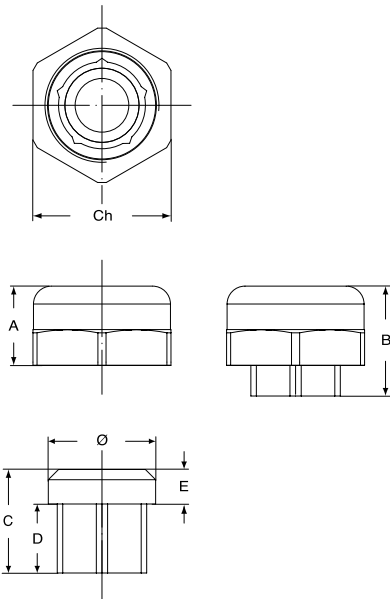
CQ VG



CQ C and CQ CA



CRQ 16 and CRQ 21



CALUS Type 4/4X/12

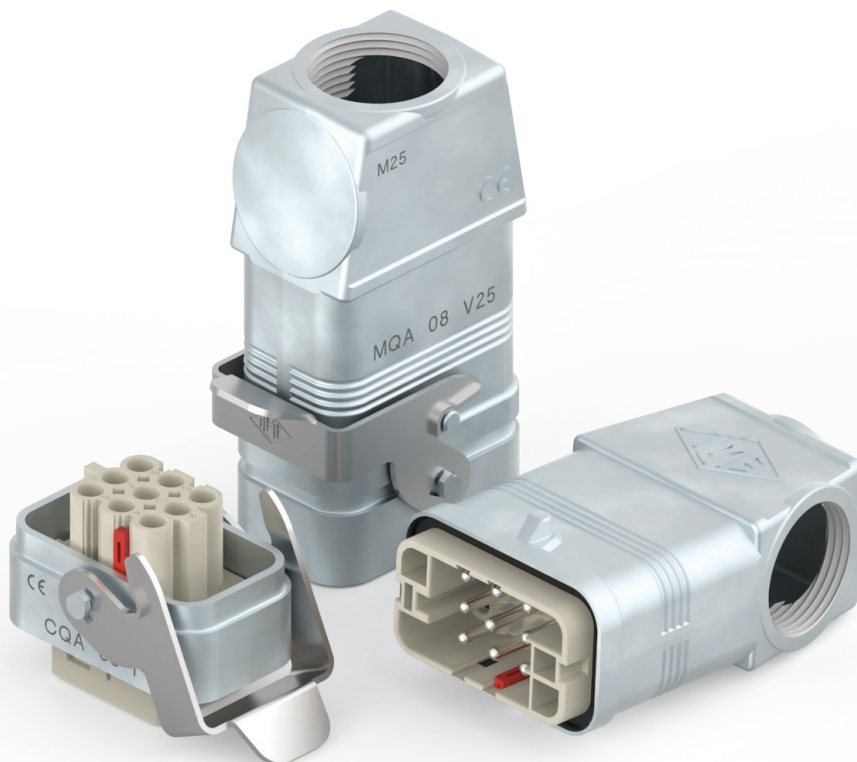


CQA/MQA 08 SIZE “32.13”

Compact, metallic enclosures with stainless steel lever

AXYR® CQYF /M 08E - CRIMP CQF /M 08E

New inserts in crimp and AXYR® technology



CQA 08 I, MQA 08 025 /V25 enclosures
size “32.13” for new connectors with PE plate

CQ connectors 8 P + ⊕ with PE plate

AXYR® CQYF /M 08E	}	16 A	500 V	6 kV	3
Crimp CQF /M 08E		16 A	400/690 V	8 kV	2



Find out more
www.ilme.com

TECHNICAL FEATURES



Watch our
technical clip

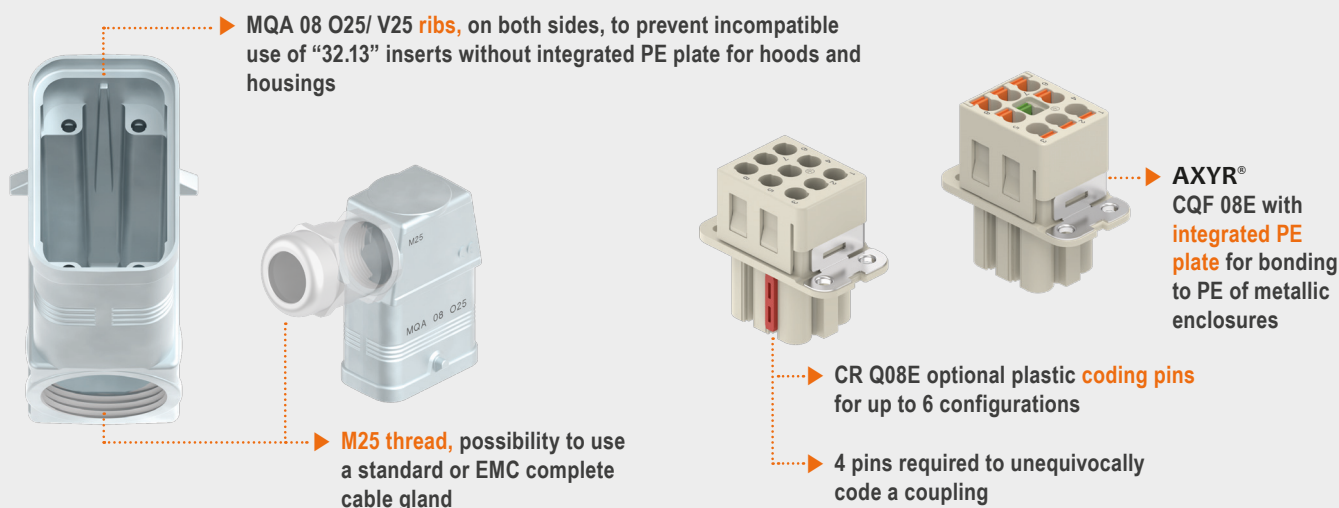
The new **metallic enclosures CQA/MQA size “32.13”** have been developed with utmost ease of assembly and simplicity in mind.

Being metallic, these new zinc alloy, zinc plated die cast enclosures, require proper bonding to protective earth (PE), for safety reasons. The existing solutions on the market, in order to fulfil this requirement and provide a safety-robust design in line with the mandatory CE marking statement for such devices, were unsatisfactory in this regard: such a compact design leaves no space for including a separate PE terminal inside the hoods/ housings without implying the split of the hood/housing in two parts – thus adding at least two screws and one sealing gasket – and the presence of an additional arm and screw terminal inside the hood, likely to obstruct the wiring space, thus making the assembly utterly complex, expensive, and prone to additional troubles in keeping the high IP degree of protection provided by such enclosures.

On the other hand, insulating enclosures do not provide – although special insulating metallized EMC versions CQS 08 (CN.19 pages 573-575) exist – the necessary shielding of electromagnetic interference that the “32.13” connector inserts typically require for being used in conjunction with pulse width modulation (PWM) drives (inverters) for electric motors’ speed/torque motion control, systems that are likely to produce significant harmonic pollution.

The new metallic enclosures, provided with a robust stainless steel locking lever, have their outer surface protected against corrosion by a conductive layer of galvanic zinc plating, thus they can easily serve as **EMC enclosures**, once provided with commercially available M25 EMC cable glands, and by replacing the standard rubber sealing gasket provided with the dedicated “32.13” male inserts with special conductive sealing gasket **CR 08 EMC** (see CN.19 page 575).

- Q **New metallic enclosures CQA/MQA size “32.13”** were therefore demanded to serve such applications. The solution envisaged is to let the “32.13” connector inserts provide such bonding to the surrounding metal hood/housing via a **newly introduced PE plate** reliably in contact with their PE male or female contact.
In order to dumb-proof avoid possibly hazardous mounting of any previously available connector inserts not provided with such PE plate (i.e.: CQF /M 08, CQF /M 04/2, CQF /M 17) into these **new series CQA/MQA metallic enclosures**, these ones have been provided by **internal keys** that match only with the corresponding **keyways** foreseen on the new inserts **CQYF /M 08E (AXYR®)** and **CQF /M 08E (crimp)**, the only ones suitable for these enclosures.
- Q **The new AXYR® CQYF /M 08E connector inserts** have been developed already equipped with such additional PE plate, so as to be immediately available for installation either on the traditional insulating housings series CQ/MQ, or on the **new size “32.13” series CQA/MQA metallic enclosures**.
- Q The existing crimp equivalent inserts **CQF /M 08** – unsuitable for metallic hoods/housings – needed to be complemented by a new variant, equipped with such additional PE plate; thus, the **new crimp version CQF /M 08E** (where the E after the polarity means presence of PE plate) is also suitable for use either inside traditional size “32.13” CQ/MQ insulating enclosures or inside the **new size “32.13” series CQA/MQA metallic enclosures**.



CQA - MQA Metallic version

inserts		page:
CQY 08E	8 poles + ⊕	36
CQ 08E	8 poles + ⊕	37

bulkhead mounting housings
with single lever



📅 FROM MAY 2022

hoods with 2 pegs



📅 FROM MAY 2022

description	part No.	part No.	entry M
-------------	----------	----------	------------

with lever and gasket

CQA 08 I

with pegs, side entry
with pegs, top entry

MQA 08 O25 25
MQA 08 V25 25

- cURus (ECBT2/8) pending
- CQC, EAC, DNV-GL, BV pending

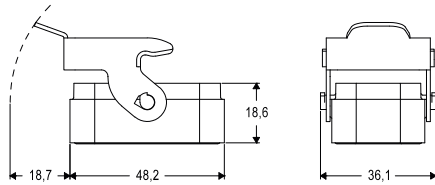
- ambient temperature limit: -40 °C ... +125 °C

- zinc die-cast, zinc plated
- stainless steel lever
- NBR flange gasket (interface gasket provided with male insert, where applicable)
- EMC (with suitable cable glands) and replacement of interface gasket on male insert with CR 08 EMC (refer to CN.19, page 575)
- top/side M25 cable entry

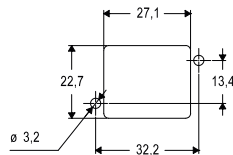
📌 **IMPORTANT NOTE:**
coded for use with “32.13”
PE inserts only.



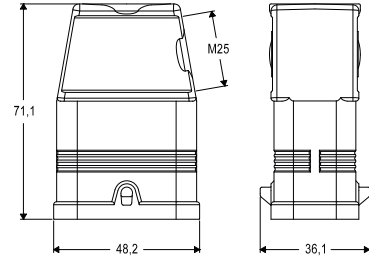
CQA 08 I



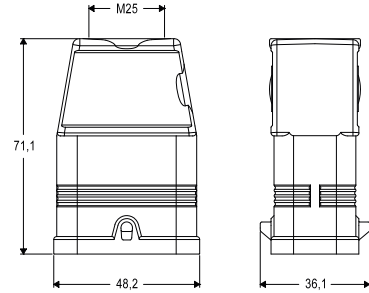
panel cut-out



MQA 08 O25



MQA 08 V25



cURus
Type 4/4X/12 pending



according to IEC/EN 60529