

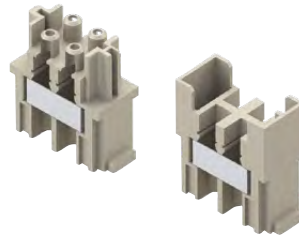
4 seats for fibre optic SC contacts

The modular inserts must be installed in suitable frames which are then mounted in traditional enclosures or in COB panel support.
Single-sized modular units may be directly mounted inside MIXO ONE enclosures.

frames for modular units	page: 316 - 317
MIXO ONE enclosures	369

WARNING:
inserts can be used on high enclosures or bulkhead housings only.

module adaptor for SC connectors



crimp FO contacts



description	part No.	part No.
-------------	----------	----------

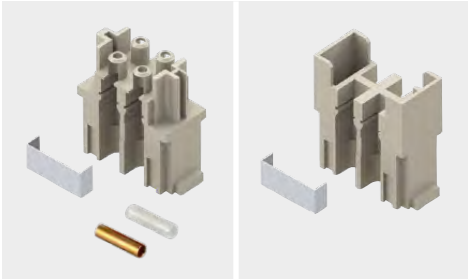
module insert with seats for 4 SC contacts (metal fixing plate included)
female insert, with ceramic sleeve
female insert, with metallic sleeve
male insert
SC contact for GI FIBRE 50/125 µm or 62.5/125 µm
SC contact for ø POF 1 mm

CX 04 SCF
CX 04 SCF-H
CX 04 SCM

CL 125 SC
CL POF SC

- certified
- insulation resistance: $\geq 10 \text{ G}\Omega$
- temperature range: from $-40 \text{ }^\circ\text{C}$ to $+85 \text{ }^\circ\text{C}$
- made of self-extinguishing thermoplastic resin UL 94V-0
- mechanical life: ≥ 500 cycles
- adaptor insert fitted with metal plate and sleeve (female only) fixing

CX 04 SC



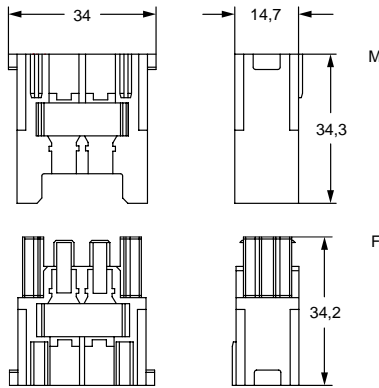
- adaptor insert designed to be used with SC contacts
- SC contact for SI FIBRE (HCS_s) 200/230 µm: **CL 230 SC** (on request)
- base equipment for SC contact GI FIBRE: **CLKZ 125 SC**
If this application is required, please contact ILME S.p.A.
- supplementary set for POF: **CLKZ POF**
(to be ordered with CLKZ 125 SC)
If this application is required, please contact ILME S.p.A.

SC duplex patch cord



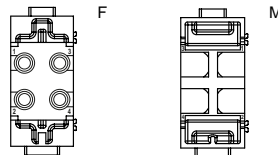
CW SC from page 240

CX 04 SCF, CX 04 SCF-H, CX 04 SCM



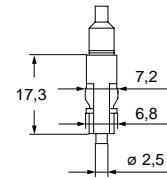
contacts side (front view)

side with reference arrow ▲

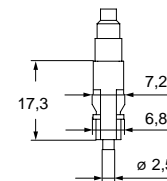


- 1 frame slot

CL 125 SC



CL POF SC

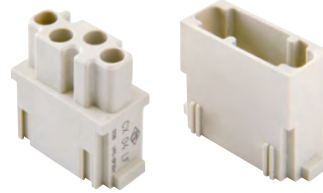




The modular inserts must be installed in suitable frames which are then mounted in traditional enclosures or in COB panel support.
Single-sized modular units may be directly mounted inside MIXO ONE enclosures.

frames for modular units page: 316 - 317
MIXO ONE enclosures 369

modular units,
crimp connections



POF / MOST crimp contacts

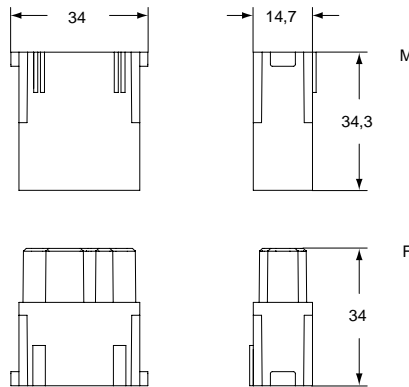


description	part No.	part No.
without contacts (to be ordered separately)		
female inserts for female contacts ¹⁾	CX 04 LF	
male inserts for male contacts ¹⁾	CX 04 LM	
female contacts POF ²⁾ 1,0 mm		CX PLF
male contacts POF ²⁾ 1,0 mm		CX PLM
female contacts MOST ^{® 3)} 1/1,5 mm		CX MLF
male contacts MOST ^{® 3)} 1/1,5 mm		CX MLM

²⁾ POF = POLYMER OPTICAL FIBRE
³⁾ MOST[®] = MEDIA ORIENTED SYSTEM TRANSPORT
MOST[®] is a registered trade mark of Microchip Technology Inc.

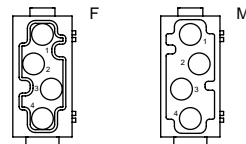
- cULus (UL for USA and Canada), BUREAU VERITAS EAC certified ¹⁾, DNV-GL
- insulation resistance: ≥ 1 GΩ
- ambient temperature limit: -40 °C ... +85 °C
- inserts made of self-extinguishing thermoplastic resin UL 94V-0
- mechanical life: ≥ 500 cycles
- contact resistance: ≤ 30 mΩ
- for crimp contacts CI series use:
CIPZ D crimping tool
CITP D turret head
- max external diameter: 2,2 mm (POF)
2,3 mm (MOST)
- polymer fibre diameter: 1,0 mm (POF)
1/1,5 mm (MOST)
- attenuation: < 2.5 dB
- to crimp contacts CX PLF / PLM and CX MLF / MLM please use tool CLPZ R (see the crimping tool section on page 730)

CX 04 LF / LM

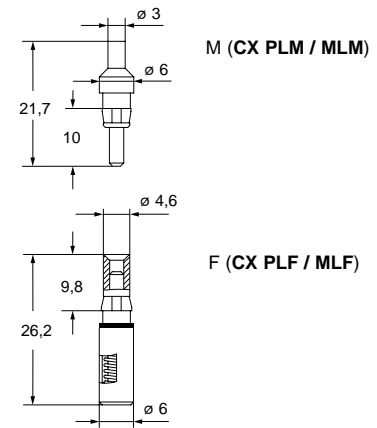


contacts side (front view)

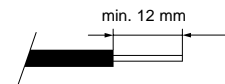
side with reference arrow ▲



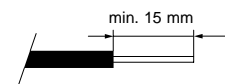
- 1 frame slot



cable stripping for fibre optic



male contact



female contact

MIXO DATA