



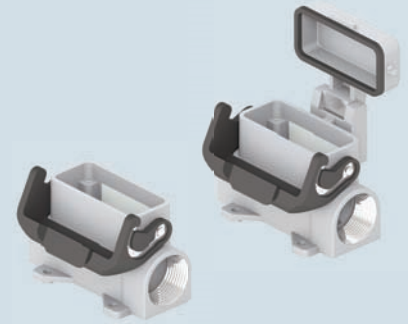
inserts:		page:
CD .....	15 poles + ⊕	55
CSAH .....	10 poles + ⊕	87
CDA .....	10 poles + ⊕	98
CDC .....	10 poles + ⊕	99
MIXO .....	1 module	179 - 214

**bulkhead mounting housings with single lever**



**NEW**

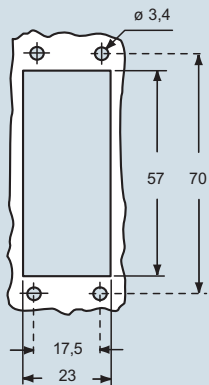
**surface mounting housings with single lever**



**NEW**

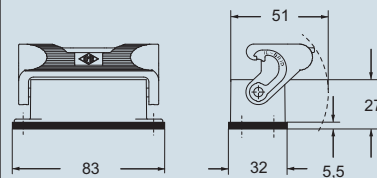
description	part No.	part No.	entry Pg	part No.	entry M
with single lever	<b>CZI 15 L</b>				
with single lever and cover	<b>CZI 15 LS</b>				
with single lever		<b>CZP 15 L</b>	16		
with single lever		<b>CZP 15 L2</b>	16 x 2		
with single lever		<b>CZP 15 LS21</b>	21	<b>MZP 15 LS25</b>	25
with single lever		<b>CZP 15 L221</b>	21 x 2	<b>MZP 15 L225</b>	25 x 2
with lever and cover		<b>CZP 15 LS</b>	16		
with lever and cover		<b>CZP 15 LS2</b>	16 x 2		
with lever and cover		<b>CZP 15 LS21</b>	21	<b>MZP 15 LS25</b>	25
with lever and cover		<b>CZP 15 LS221</b>	21 x 2	<b>MZP 15 LS25</b>	25 x 2

panel cut-out for bulkhead mounting housings in mm

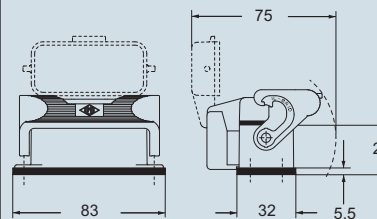


dimensions in mm

**CZI L**

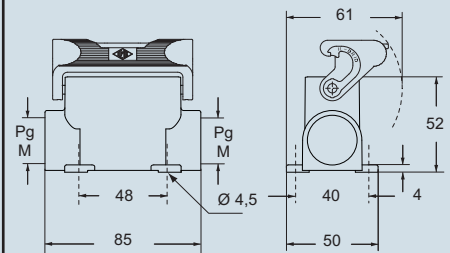


**CZI LS**

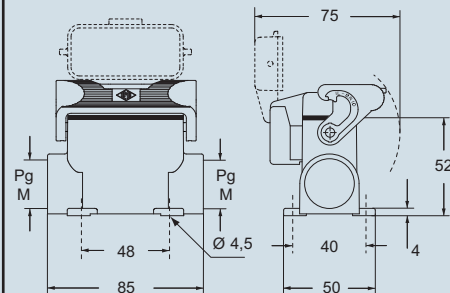


dimensions in mm

**CZP L and MZP L**



**CZP LS and MZP LS**



**N.B.:**  
The enclosures ensure IP66 protection (or IP65 for hinged cover versions) rating when mated and locked with the closing levers.

**CALUS** Type 4/4X/12



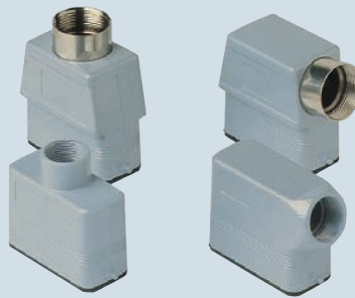
dimensions shown are not binding and may be changed without notice

IL-BRID - size 49.16



inserts:		page:
CD .....	15 poles + ⊕	55
CSAH .....	10 poles + ⊕	87
CDA .....	10 poles + ⊕	98
CDC .....	10 poles + ⊕	99
MIXO .....	1 module	179 - 214

hoods with 2 pegs



hoods with single lever



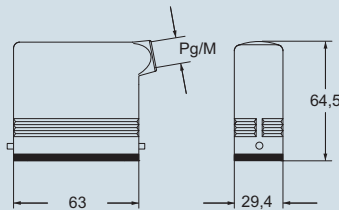
**NEW**

description	part No.		part No.		part No.		part No.	
		entry Pg		entry M		entry Pg		entry M
with pegs, side entry	<b>CZO 15 L</b>	16	<b>MZO 15 L20</b>	20				
with pegs, side entry			<b>MZO 15 L25</b>	25				
with pegs, side entry, high construction	<b>CZAO 15 L16</b>	16	<b>MZAO 15 L20</b>	20				
with pegs, side entry, high construction	<b>CZAO 15 L21</b>	21	<b>MZAO 15 L25</b>	25				
with pegs, top entry	<b>CZV 15 L</b>	13.5	<b>MZV 15 L20</b>	20				
with pegs, top entry, high construction	<b>CZAV 15 L16</b>	16	<b>MZAV 15 L20</b>	20				
with pegs, top entry, high construction	<b>CZAV 15 L21</b>	21	<b>MZAV 15 L25</b>	25				
with pegs, side entry, high construction, without adaptor *	<b>CZFO 15 L16</b>	16	<b>MZFO 15 L20</b>	20				
with pegs, side entry, high construction, without adaptor *	<b>CZFO 15 L21</b>	21	<b>MZFO 15 L25</b>	25				
with pegs, top entry, high construction, without adaptor *	<b>CZFV 15 L16</b>	16	<b>MZFV 15 L20</b>	20				
with pegs, top entry, high construction, without adaptor *	<b>CZFV 15 L21</b>	21	<b>MZFV 15 L25</b>	25				
with lever, top entry					<b>CZV 15 LG</b>	13,5	<b>MZV 15 LG20</b>	20

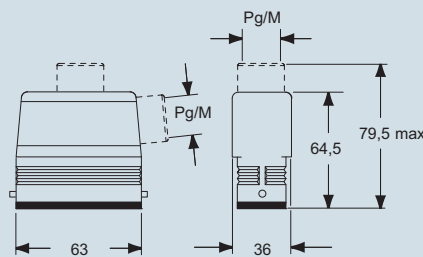
\* enclosure without adaptor, threaded on the body, to be used only with a complete cable gland.

dimensions in mm

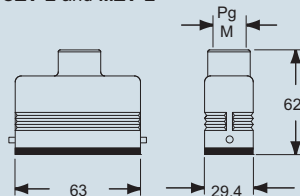
**CZO L and MZO L**



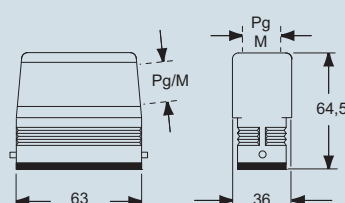
**CZAO L - MZAO L and CZAV L - MZAV L**



**CZV L and MZV L**

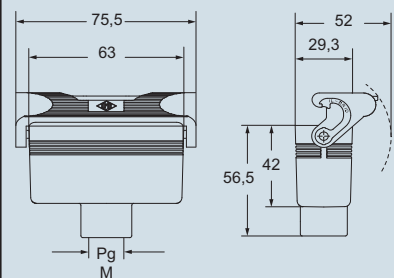


**CZFO L - MZFO L and CZFV L - MZFV L**



dimensions in mm

**CZV LG and MZV LG**



**CALUS** Type 4/4X/12



dimensions shown are not binding and may be changed without notice

IL-BRID - size 49.16



inserts:	page:
CD ..... 15 poles + ⊕	55
CSAH ..... 10 poles + ⊕	87
CDA ..... 10 poles + ⊕	98
CDC ..... 10 poles + ⊕	99
MIXO ..... 1 module	179 - 214

**covers**



**NEW**

Cover versions L and LG cannot be used together with coding pins. If this application is required, please contact ILME SpA.

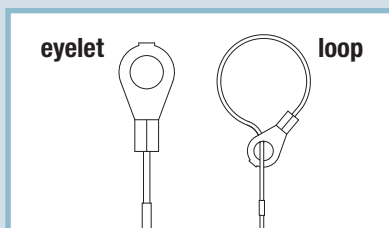
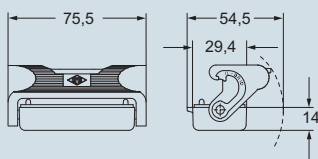
description	part No. (with eyelet)	part No. (with loop)
with pegs (for 1 lever enclosures)	<b>CZC 15 L</b>	<b>CZC 15 SL</b>
with lever (for enclosures with pegs)		<b>CZC 15 LG</b>

dimensions in mm

**CZC L (SL)**



**CZC LG**



**CALUS** Type 4/4X/12



dimensions shown are not binding and may be changed without notice

IL-BRID - size 49.16