



inserts:	page:
CD 50 poles + ⊕	58
CDD 76 poles + ⊕	71
CSAH 32 poles + ⊕	89
CDA 32 poles + ⊕	102
CDC 32 poles + ⊕	103

insert dimensions:
2 x (66 x 16) mm

hoods with 4 pegs



hoods with 2 levers or 4 pegs

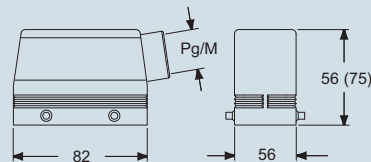


description	part No.		part No.		part No.		part No.	
		entry Pg		entry M		entry Pg		entry M
with pegs, side entry	CHO 50	21	MHO 50.25	25				
with pegs, side entry			MHO 50.32	32				
with pegs, side entry, high construction	CAO 50.21	21	MAO 50.25	25				
with pegs, side entry, high construction	CAO 50.29	29	MAO 50.32	32				
with pegs, top entry, high construction					CAV 50.21	21	MAV 50.25	25
with pegs, top entry, high construction					CAV 50.29	29	MAV 50.32	32
with levers and gasket, top entry, high construction					CAV 50 G29	29	MAV 50 G32	32
with pegs, side entry, high construction, without adaptor *	CFO 50.21	21	MFO 50.25	25				
with pegs, side entry, high construction, without adaptor *	CFO 50.29	29	MFO 50.32	32				
with pegs, top entry, high construction, without adaptor *					CFV 50.21	21	MFV 50.25	25
with pegs, top entry, high construction, without adaptor *					CFV 50.29	29	MFV 50.32	32
with levers and gasket, top entry, high, without adapter *					CFV 50 G29	29	MFV 50 G32	32

* enclosure without adaptor, threaded on the body, to be used only with a complete cable gland.

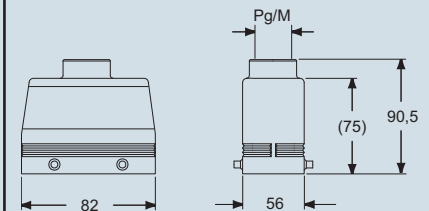
dimensions in mm

CHO (CAO/CFO) and MHO (MAO/MFO)

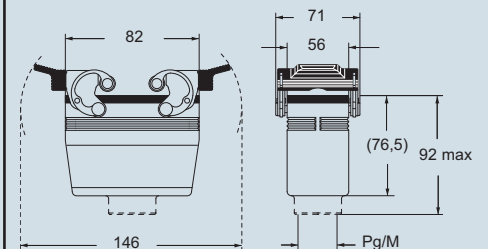


dimensions in mm

CAV (CFV) and MAV (MFV)



CAV G (CFV G) and MAV G (MFV G)



CALUS Type 4/4X/12



dimensions shown are not binding and may be changed without notice

C-TYPE - size 66.40



inserts:	page:
CD 50 poles + ⊕	58
CDD 76 poles + ⊕	71
CSAH 32 poles + ⊕	89
CDA 32 poles + ⊕	102
CDC 32 poles + ⊕	103

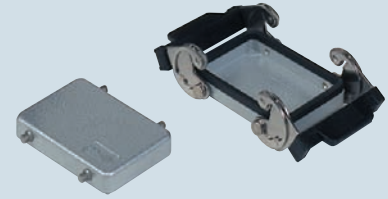
insert dimensions:
2 x (66 x 16) mm

CHC 50 and CHC 50 G covers cannot be used together with coding pins. If this application is required, please contact ILME SpA.

hoods with 2 levers



covers



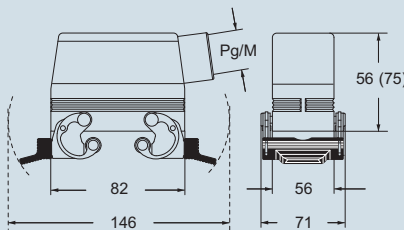
description	part No.		entry		part No. (with eyelet)	part No. (with loop)
			Pg	M		
with levers, side entry ¹⁾	CHO 50 X	21	MHO 50 X25	25		
with levers, side entry ¹⁾			MHO 50 X32	32		
with levers, side entry, high construction ¹⁾	CAO 50 X	21	MAO 50 X25	25		
with levers, side entry, high construction ¹⁾	CAO 50 X29	29	MAO 50 X32	32		
with levers, top entry, high construction ¹⁾	CAV 50 X	21	MAV 50 X25	25		
with levers, top entry, high construction ¹⁾	CAV 50 X29	29	MAV 50 X32	32		
with levers, side entry, high construction, without adaptor ^{1)*}	CFO 50 X	21	MFO 50 X25	25		
with levers, side entry, high construction, without adaptor ^{1)*}	CFO 50 X29	29	MFO 50 X32	32		
with levers, top entry, high construction, without adaptor ^{1)*}	CFV 50 X	21	MFV 50 X25	25		
with levers, top entry, high construction, without adaptor ^{1)*}	CFV 50 X29	29	MFV 50 X32	32		
with 4 pegs (for enclosures with 2 levers)					CHC 50	CHC 50 S
with 2 levers (for hoods with 4 pegs)						CHC 50 G

¹⁾ may be combined with enclosures:
- CHI 50 CS, CHP 50 CS and MHP 50 CS

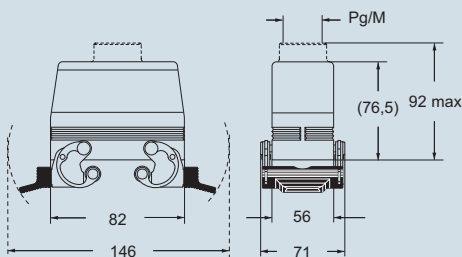
* enclosure without adaptor, threaded on the body, to be used only with a complete cable gland.

dimensions in mm

CHO X (CAO X/CFO X) and MHO X (MAO X/MFO X)

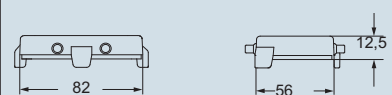


CAV X (CFV X) and MAV X (MFV X)

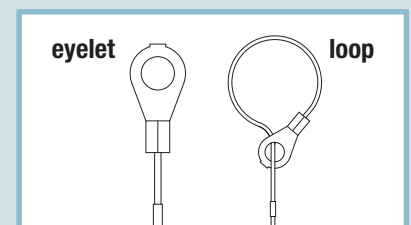
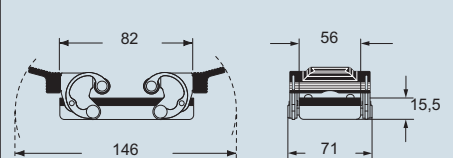


dimensions in mm

CHC(S)



CHC G



ILME® Type 4/4X/12



dimensions shown are not binding and may be changed without notice

C-TYPE - size 66.40