

CX 01 UF/UM for 1 USB connector

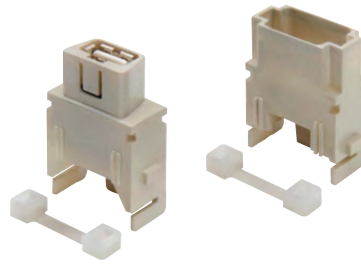
The modular inserts must be installed in suitable frames which are then mounted in traditional enclosures* or in COB panel support.
Single-sized modular units may be directly mounted inside MIXO ONE enclosures.

frames for modular units* page: 316 - 317

MIXO ONE enclosures 369

* enclosures: bulkhead mounting housings, high construction housings or high construction hoods

housing for USB male connectors, USB female - female connectors



patch cable USB



description

part No.

part No.

female insert with USB female - female connector ¹⁾
male insert without USB male connector (patch cable to be ordered separately) ¹⁾

CX 01 UF
CX 01 UM

patch cable USB-A / USB-A, 2 m ²⁾

CW 2 UAM

²⁾ 5 m on request

- characteristics according to EN 61984:

1A 50V 0,8kV 3

- cULus (UL for USA and Canada),

certified ¹⁾

- insulation resistance: $\geq 10 \text{ G}\Omega$

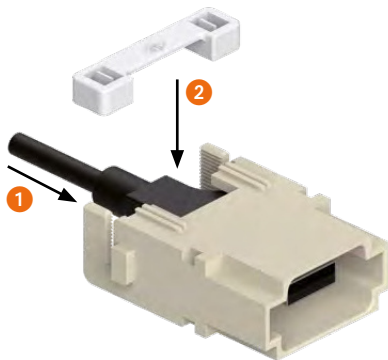
- contact resistance: $\leq 3 \text{ m}\Omega$

USB connector features:

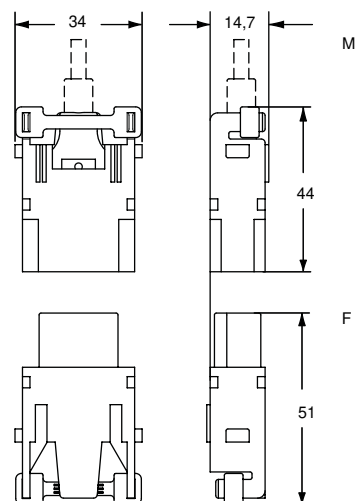
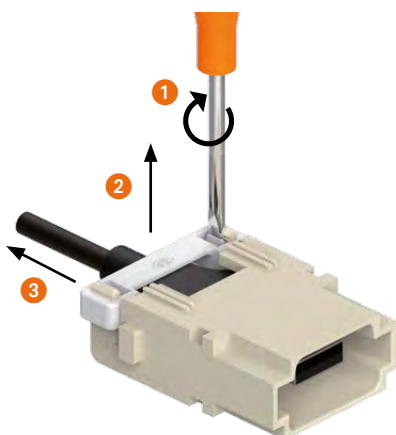
- USB-A / USB-A Hi-Speed - 2.0 insert

- temperature range: from -25 °C to +80 °C

FIXING

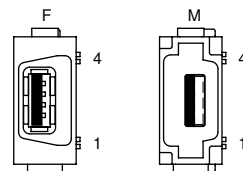


REOPENING

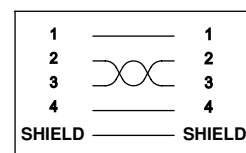
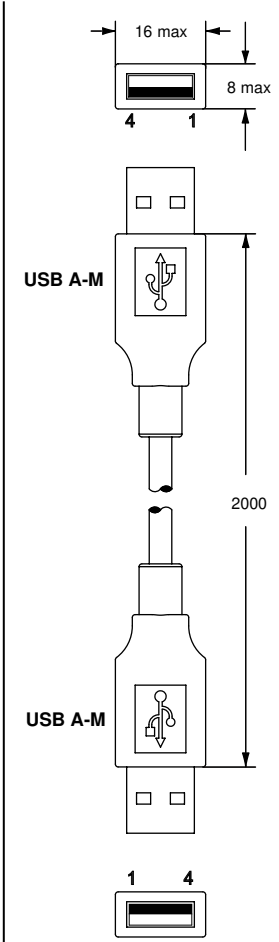


contacts side (front view)

side with reference arrow ▲



- 1 frame slot



MIXO DATA