

## SYSTEM 200V – STEP®7 programmable

### Modular PLC-System – CPU-, Fieldbus-Interfaces

The CPUs of the system 200V need only 30% of the space required of the S7-300® CPUs, but nevertheless operate with the full STEP®7 instruction set S7-315® by SIEMENS.

Through the standard MPI interface via PG programming unit, PC adaptor and operator panels from SIEMENS, ESA, ADVANTECH, VIPA a.s.o. can be connected. To save the project, a custom MMC card can be used.

The RAM and Flash memory necessary for the operation are included in the CPU. Additionally PROFIBUS-DP master, DP-Slave, RS232 interface or TCP/IP CP-unit can be combined in different CPU variations. High memory sizes up to 128kByte program memory and 192kByte load memory with short cycle times offer a big area of application. A CPU can supply up to 32 units.



Dimensions 1 slot  
(H x W x D): 76 x 25,4 x 74mm  
Dimensions 2 slots  
(H x W x D): 76 x 50,8 x 74mm



STEP7 TIA CPU			
CPU HW identification uniformly: 6ES7315-2AG10-0AB0/V2.6			
CPU 21x Order No.:	Memory/ Load memory	Inter-faces	PRICE in Euro
VIPA 214-1BC06	48/80kByte	MPI	361,-
VIPA 214-1BA06	96/144kByte	MPI	410,-
VIPA 214-2BM06	96/144kByte	MPI/DP-Master	725,-
VIPA 215-1BA06	128/192kByte	MPI	724,-
VIPA 215-2BE06	128/192kByte	MPI / LAN (PG/OP)	754,-
VIPA 215-2BT16	128/192kByte	MPI / LAN (CP343)	1.030,-

STEP7 CPU			
CPU HW identification uniformly: 6ES7315-2AF03-0AB0/V1.2			
CPU 21x Order No.:	Memory/ Load memory	Inter-faces	PRICE in Euro
VIPA 214-1BC03	48/80kByte	MPI	361,-
VIPA 214-1BA03	96/144kByte	MPI	410,-
VIPA 214-2BE03	96/144kByte	MPI/LAN (PG/OP)	449,-
VIPA 214-2BP03	96/144kByte	MPI / DP-Slave	461,-
VIPA 214-2BM03	96/144kByte	MPI / DP-Master	725,-
VIPA 214-2CM03	96/144kByte	MPI/CANopen-Master	725,-
VIPA 214-2BS03	96/144kByte	MPI / 2xRS232	784,-
VIPA 214-2BS13	96/144kByte	MPI / 1xRS232	458,-
VIPA 214-2BS33	96/144kByte	MPI / 1xRS485	461,-
VIPA 214-2BT13	96/144kByte	MPI / LAN (CP343)	884,-
VIPA 215-1BA03	128/192kByte	MPI	724,-
VIPA 215-2BE03	128/192kByte	MPI/LAN (PG/OP)	754,-
VIPA 215-2BP03	128/192kByte	MPI/DP-Slave	775,-
VIPA 215-2BM03	128/192kByte	MPI/DP-Master	1.030,-
VIPA 215-2CM03	128/192kByte	MPI/CANopen-Master	1.030,-
VIPA 215-2BS03	128/192kByte	MPI / 2xRS232	1.030,-
VIPA 215-2BS13	128/192kByte	MPI / 1xRS232	772,-
VIPA 215-2BS33	128/192kByte	MPI / 1xRS485	775,-
VIPA 215-2BT13	128/192kByte	MPI / LAN (CP343)	1.030,-
VIPA 953-OKX10	512MByte	MMC flash card	116,-
VIPA 950-OKB00	-	PG/AG-download cable	54,-



FIELDBUS-SLAVE INTERFACES		
Order No.:	Technical data	PRICE in Euro
VIPA 253-1DP01	PROFIBUS-DP, address 1-99	160,-
VIPA 253-1DP11	PROFIBUS-DP, LWL, address 1-99	191,-
VIPA 253-1CA01	CANopen, address 1-99	160,-
VIPA 253-1DN00	DeviceNet, address 0-63	160,-
VIPA 253-1IB00	Interbus, to 16 modules	169,-
VIPA 253-1NE00	Ethernet, ModbusTCP	247,-

FIELDBUS-SLAVE ECO INTERFACES		
Order No.:	Technical data	PRICE in Euro
VIPA 253-1DP31	PROFIBUS DP-Slave, address 1-125, up to 8 units, DC 24 V, 12MBaud, DP-V0, DP-V1	137,-
VIPA 253-1CA30	CANopen-Slave, address 1-125, up to 8 units, DC 24V, 1MBaud	137,-



## SYSTEM 200V – STEP<sup>®</sup>7 programmable

Modular PLC-System – I/O-Units, Accessories

Order No.:	FUNCTION MODULES Technical data	PRICE in Euro
VIPA 238-2BC00	SM 238C system expansion, 12 DI, 4 DI/A 24VDC 1A, 6 (16bits)/3 (32bits) of counter 30kHz, 3x AI 12 bits: ±10V/4 V/400mV/20 mA and 4-20mA 1x AI 12 bits: Pt100 / 1000, Ni100/1000, 600/3000 ohm, 2xAA 12bits: ±10V/20 mA, 1-5V, 0-10V, 0-20mA, 4-20mA	311,-
VIPA 250-1BA00	2x32Bit / 4x16Bit incremental counter inputs 24VDC, max. 1Mhz, 2xDA 24VDC/1A	247,-
VIPA 250-1BS00	1x12/24 bits of counter input SSI, RS422, 600kBd, 2xDA 24VDC /1A	263,-
VIPA 253-1BA00	Positioning-module for stepping motor 1 axis, RS422, potential decoupled	434,-
VIPA 254-1BA00	Positioning-module FM for servomotor, 1 axis, incremental encoder RS422, potential decoupled, TU 3xDC 24 V, TH 2xDC 24 V/1A	434,-



Dimensions 1 slot  
(H x W x D): 76 x 25,4 x 74mm  
Dimensions 2 slots  
(H x W x D): 76 x 50,8 x 74mm

Order No.:	CP- MODULES Technical data	PRICE in Euro
VIPA 208-1DP01	PROFIBUS-DP master, up to 12Mbps, 100/200V	488,-
VIPA 240-1DA10	4 ports Ethernet Switch, 10/100Mbps, autonegotiation, speed sensing, crossover	204,-
VIPA 240-1BA20	RS232, DB9, ASCII, 3964R, MODBUS RTU/ASCII	269,-
VIPA 240-1CA20	RS485, DB9, ASCII, 3964R, MODBUS RTU/ASCII	269,-
VIPA 240-1CA21	RS422/RS485, DB9, ASCII, 3964R, MODBUS RTU/ASCII	269,-

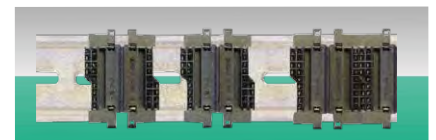


Order No.:	M-BUS Technical data	PRICE in Euro
VIPA 240-1FA20	Communication processor for M-Bus-system (Metering-Bus), 2-wire fieldbus for data acquisition of consumption, electrical isolated, up to 6 slaves possible.	269,-



### RADIOTECHNOLOGY FOR BUILDING AUTOMATION

EnOcean is a radio system without any power supply which was developed in 2001 by the company EnOcean. Based on the short signal duration of 0.5ms and 10mW transmitting power the radio transmission technology has a very low power demand of only 50 µWs. At this rate, the system uses energy from the smallest changes of pressure or temperature for the electricity supply of the sensors. The range of the sensors reaches up to 300m distance outside.



Order No.:	ENOCEAN RADIOTRANSMITTER Technical data	PRICE in Euro
VIPA 240-1EA20	Communication central processing unit for EnOcean, radio sensors, 868.3 MHz, SMA jack	269,-
VIPA 240-0EA00	EnOcean aerial for CP240, direct mounting on module	56,-
VIPA 240-0EA10	EnOcean aerial for CP240, magnet foot aerial incl. 1.5 m of cable	56,-

Order No.:	POWER PACKS & PASSIV TERMINALS MODULES Technical data	PRICE in Euro
VIPA 207-1BA00	prim. AC 100-230VAC/sec. 24VDC, 2A	101,-
VIPA 207-2BA20	prim. AC 100-230VAC/sec. 24VDC, 2A ± on 2x11 terminals red/blue	123,-
VIPA 201-1AA00	2x11 terminals, in each case for the potential distribution, grey-grey	23,-
VIPA 201-1AA10	2x11 terminals, in each case for the potential distribution, green/yellow-grey	28,-
VIPA 201-1AA20	2x11 terminals, in each case for the potential distribution, red/blue	28,-
VIPA 201-1AA40	2x5 terminals, gray-gray 2x6 terminals, red/blue	32,-
VIPA 290-1AF30	35 mm Alu DIN-Rail, Length: 530mm	17,70

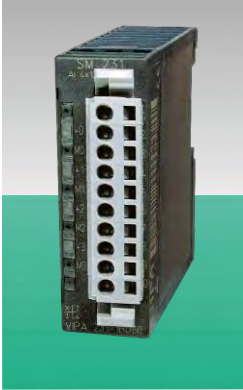
Order No.:	BACK WALL BUS Modules	PRICE in Euro
VIPA 290-0AA10	1	3,10
VIPA 290-0AA20	2	6,20
VIPA 290-0AA40	4	11,40
VIPA 290-0AA80	8	21,-

Arbitrarily addable to max. 32 units.

Order No.:	LINE EXTENTION Technical data	PRICE in Euro
VIPA 260-1AA00	Basic module for CPU line, max. 3 extensions	124,-
VIPA 261-1CA00	Interface modul for extension line from 2. to 4.	140,-
VIPA 260-1XY05	cable connection 0.5 m	40,-
VIPA 260-1XY10	cable connection 1 m	44,-
VIPA 260-1XY25	cable connection 2.5 m	58,-

## SYSTEM 200V – STEP<sup>®</sup>7 programmable

Modular PLC-System – I/O-Units, Accessories



Dimensions 1 slot  
(H x W x D): 76 x 25,4 x 74mm  
Dimensions 2 slots  
(H x W x D): 76 x 50,8 x 74mm



Order No.:	DIGITAL INPUT Technical data	PRICE in Euro
VIPA 221-1BF00	DI 8x DC 24V	65,-
VIPA 221-1BF50	DI 8x DC 24V, NPN	70,-
VIPA 221-1BF10	DI 8x DC 24V, 0,2ms	65,-
VIPA 221-1BF21	DI 8x, alarm DC 24V, 0,2ms	107,-
VIPA 221-1BH10	DI 16x DC 24V	129,-
VIPA 221-1BH51	DI 16x DC 24V, NPN	139,-
VIPA 221-2BL10	DI 32x DC 24V	245,-
VIPA 221-1FD00	DI 4x AC/DC 90...230V, potential decoupled	104,-
VIPA 221-1FF20	DI 8x AC/DC 60...230V	115,-
VIPA 221-1FF30	DI 8x AC/DC 24...48V	115,-
VIPA 221-1FF50	DI 8x AC 180...265V	115,-
VIPA 221-1BH20	DI 16x DC 24V, (2x counter)	177,-
VIPA 221-1BF30	DI 8x DC 24V, ECO	59,-
VIPA 221-1BH30	DI 16x DC 24V, ECO	107,-

Order No.:	DIGITAL OUTPUT Technical data	PRICE in Euro
VIPA 222-1BF00	DO 8x DC 24V, 1A	76,-
VIPA 222-1BF10	DO 8x DC 24V, 2A	86,-
VIPA 222-1BF20	DO 8x DC 24V, 2A, potential decoupled, (4 groups)	97,-
VIPA 222-1BF50	DO 8x DC 24V, 0.5A, NPN	81,-
VIPA 222-1BH10	DO 16x DC 24V, 1A	151,-
VIPA 222-1BH20	DO 16x DC 24V, 2A	188,-
VIPA 222-1BH50	DO 16x DC 24V, 0.5A, NPN	121,-
VIPA 222-2BL10	DO 32x DC 24V, 1A	284,-
VIPA 222-1HF00	DO 8x relay, 230VAC / 24VDC, 5A	103,-
VIPA 222-1HD10	DO 4x relay, galvanic decoupled, 230VAC/30VDC, 5A	70,-
VIPA 222-1HD20	DO 4x relay, galvanic decoupled, 230VAC/30VDC, 16A	105,-
VIPA 222-1FF00	DO 2x, solid-state, 230VAC/400VDC, 0.5A	153,-
VIPA 222-1DB00	DO 2x dimmer f. ohm., ind., cap. load, 230VAC/2A	125,-
VIPA 222-1BF30	DO 8x DC 24V, 0.5A, ECO	70,-
VIPA 222-1BH30	DO 16x DC 24V, 0.5A, ECO	124,-

Order No.:	DIGITAL INPUT AND OUTPUT Technical data	PRICE in Euro
VIPA 223-1BF00	DI/O 8x DC 24V, 1A, soft-configurable	92,-
VIPA 223-2BL10	DI/O 16x DC 24V and DO 16x DC 24V, 1A	279,-

Order No.:	ANALOG INPUT AND OUTPUT Technical data	PRICE in Euro
VIPA 231-1BD53	Analog input, 2 conductors/4x16Bit, 4 conductors/2x16 bits PT100, PT/Ni1000, NiCrNi, thermocouple, J, K, N, R, S, T ±10V, ±400mV, ±20mA, 4-20mA	228,-
VIPA 231-1BD60	Analog input, 4x12Bit, 0/4-20mA, potential decoupled channel	340,-
VIPA 231-1BD70	Analog input, 4x12Bit, ±10V, potential decoupled channel	340,-
VIPA 231-1BF00	Analog input 2conductor/8x16bits, 4conductor/4x16bits PT100, thermocouple J, K, T, 0-60mV	378,-
VIPA 231-1FD00	Analog input FAST, 4x16Bit, ±400mV, ±4V, ±10V, ±20mA, 4-20mA, process and diagnosis alarm, average value generation more than the last 2.4, 8 or 16 values Cycle time 1ms for 4 channels	386,-
VIPA 232-1BD51	Analog source module, 4 outputs 0-10V, ±10V, 0-20mA, 12bits	228,-
VIPA 234-1BD50	Analog input and output 2x12 bits of input, 2x12bits of output, ±10V, 0-10V, 1-5V, ±20mA, 0-20mA, 4-20mA	290,-
VIPA 234-1BD60	3x AI 12bits: ±10V/4 V/400mV/20 mA and 4-20mA, 1x AI 12bits: Pt100/1000, Ni100/1000, 600/3000 ohm, 2xAA 12bits: ±10V/20 mA, 1-5V, 0-10V, 0-20mA, 4-20mA, Default value can be activated at PLC stop.	295,-
VIPA 231-1BD30	AI 4x12Bit, ±10V, ECO	137,-
VIPA 231-1BD40	AI 4x12Bit, 4..20mA, ±20mA, ECO	137,-
VIPA 232-1BD30	AO 4x12Bit, 0..10V, ±10V, ECO	145,-
VIPA 232-1BD40	AO 4x12Bit, 0/4..20mA, ECO	145,-



All prices in euro excluding VAT