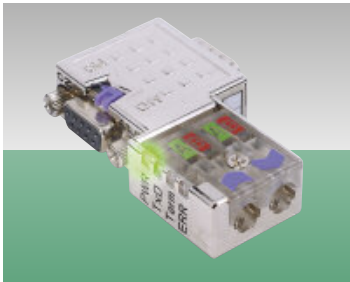


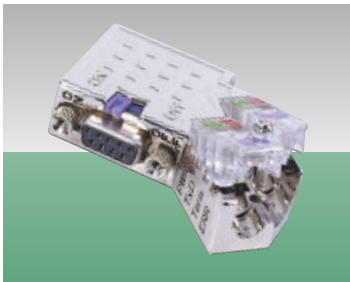
GENERAL ACCESSORIES

PROFIBUS / PROFINET Connectors & Cables, S5 Retrofit – PROFIBUS DP slave modules



Features EasyConn and standard connector:

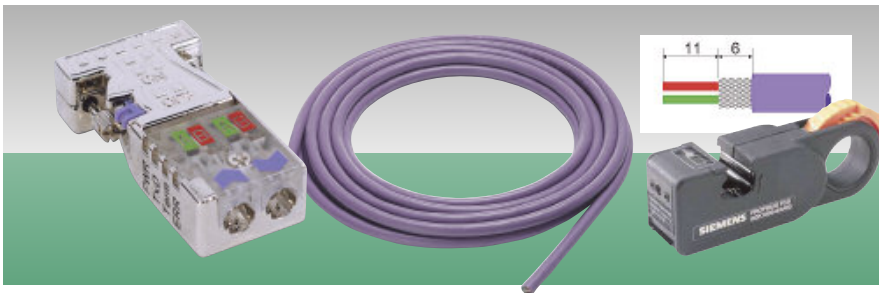
- Visual connection check (cross wiring, position of shield and cable)
- High sturgeon safety and robustness by solid zinc pressure casting full metal casing
- Cable splicing via comfortable cutting-clamp technology
- Lostsafe one-screw-mounting system
- Integrated terminating resistor
- Integrated PG/diagnosis jack
- 0°, 45°, 90° cable departure
- Additional PG connection with 90° cable departure



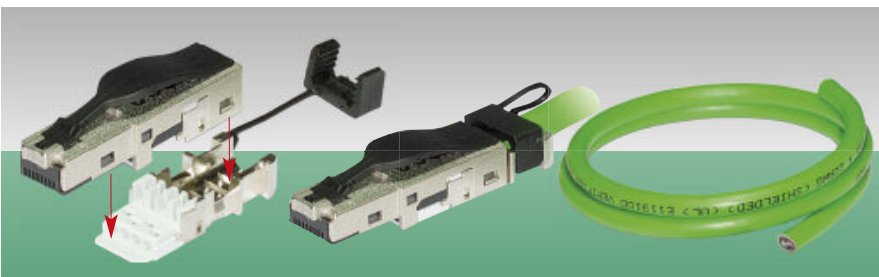
Features diagnosis electronic with EasyConn:

- Status display via integrated LEDs for bus-test functions

PWR-LED	■ (on)	power supply 4...5,5V for device OK
TXD-LED	■ (blinks)	device activity on bus
Term-LED	■ (off)	terminating resistor deactivated
	■ (on)	terminating resistor activated
ERR-LED	■ (blinks)	terminating resistor defective
	■ (off)	bus state OK
ERR-LED	■ (blinks)	wrong signal level
	■ (on)	no termination or open

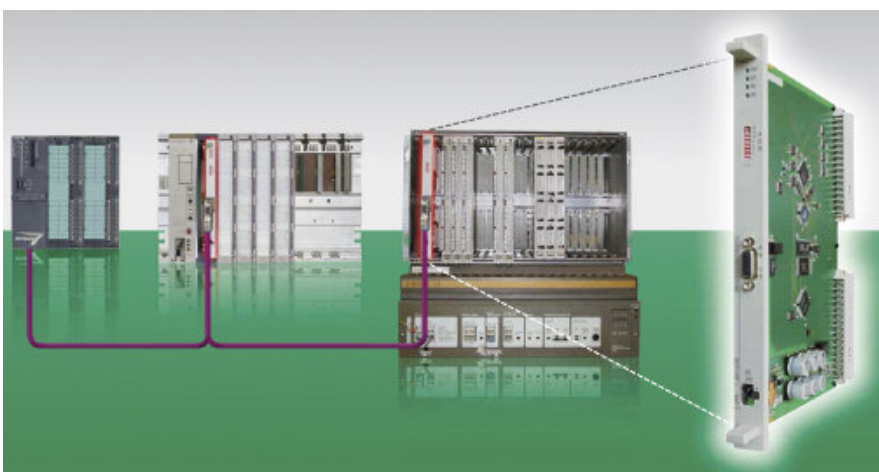


Order No.:	PROFIBUS CONNECTORS Technical data	PRICE in Euro
VIPA 972-ODP01	Standard PROFIBUS connector, 90°, PG jack, cutting-clamp technology	34,-
VIPA 972-ODP10	EasyConn PROFIBUS connector, 90°, PG jack, diagnosis electronics, cutting-clamp technology	44,-
VIPA 972-ODP20	EasyConn PROFIBUS connector, 45°, PG jack, diagnosis electronics, cutting-clamp technology	44,-
VIPA 972-ODP30	EasyConn PROFIBUS connector, 0°, diagnosis electronics, cutting-clamp technology	44,-
VIPA 972-9DP01	Standard PROFIBUS connector, 90°, PG jack, cutting-clamp technology, 100 pieces	on request
VIPA 972-9DP10	EasyConn PROFIBUS connector, 90°, PG jack, diagnosis electronics, cutting-clamp technology, 100 pieces	on request
VIPA 972-9DP20	EasyConn PROFIBUS connector, 45°, PG jack, diagnosis electronics, cutting-clamp technology, 100 pieces	on request
VIPA 972-9DP30	EasyConn PROFIBUS connector, 0°, diagnosis electronics, cutting-clamp technology, 100 pieces	on request



Order No.:	PROFIBUS CABLES Length	PRICE in Euro
VIPA 830-OLC00	100m	133,-
VIPA 830-OLD00	200m	266,-
VIPA 830-OLE00	500m	664,-
VIPA 830-OLF00	1.000m	1.327,-

PROFIBUS DISMANTLE TOOL		
905-6AA00	Dismantle Tool (Manufacturer: SIEMENS)	110,-



Order No.:	PROFINET CABLES Length	PRICE in Euro
VIPA 830-OPC00	100m	205,-
VIPA 830-OPD00	200m	399,-
VIPA 830-OPE00	500m	989,-
VIPA 830-OPF00	1.000m	1.905,-

Order No.:	PROFINET CONNECTORS Technical data	PRICE in Euro
VIPA 972-OPN00	PROFINET & EtherCAT plug, 180°, RJ45, 8 wire, insulation displacement connection, AWG24/1 - 22/1; AWG26/7 - 22/7, 1 piece	19,-
VIPA 972-8PN00	PROFINET & EtherCAT plug, 180°, RJ45, 8 wire, insulation displacement connection, AWG24/1 - 22/1; AWG26/7 - 22/7, 1 pieces	180,-

Order No.:	S5®-PROFIBUS SLAVE ADAPTOR Name	PRICE in Euro
VIPA 306-1LE00	IM 306 DP-Slave - 115U ZG/EG IM*, power supply 24VDC inclusive	1.061,-
VIPA 306-1UZ00	IM 306 DP-Slave - 135U/155U ZG CPU	1.061,-
VIPA 306-1UE00	IM 306 DP-Slave - 135U/155U ZG/EG IM, power supply 24VDC inclusive	1.061,-

* Adaptation capsules 6ES5 491-0LB11 for application in AG-115U racks necessary.

GENERAL ACCESSORIES

PROFIBUS Repeater, ETHERNET & PROFINET Switches

PROFIBUS DP-REPEATER

The ProfiHub B5 PROFIBUS-DP repeater in a IP20 casing for industrial automation, to implement long multi-device spur lines and backbone structures with star/tree segments for PROFIBUS-DP. It has the functionality of 5 galvanic isolated transparent repeaters. This allows network structures with extended spur lines that can handle a maximum of 31 devices individually and a length equal to the main bus. The ProfiHub B5 refreshes a received message

on one channel and transfers it to all the other channels. The advanced 12Mbps core of the repeater B1 is identical to the ProfiHub. It can be cascaded unlimitedly and is equipped with an isolated RS485 interface. The data is constantly monitored for glitches which are digitally filtered out. Every channel has on-board switchable termination and can drive 31 devices.



Order No.:	PROFIBUS REPEATER Technical Data	PRICE in Euro
VIPA 920-1CB50	ProfiHub B5, 5 galvanic isolated channels (repeater segments), 31 devices per channel, transparent for all PROFIBUS DP protocols (DP-V0, DP-V1, DP-V2, FDL, MPI, FMS, PROFIsafe, PROFIdrive a.s.o.), transmission speed 9.6kbps to 12Mbps (including 45.45kbps), PROFIBUS address not required, integrated termination facilities (switches), operating temperature -20 to +75°C, dimensions: 167 x 111 x 32mm, supply: 10-30 VDC, 130mA, isolation class IP 20	1.300,-
VIPA 920-1BB10	PROFIBUS Repeater B1, 1 repeater segment, 31 devices per channel, transparent for all PROFIBUS DP protocols (DP-V0, DP-V1, DP-V2, FDL, MPI, FMS, PROFIsafe, PROFIdrive a.s.o.), transmission speed 9.6kbps to 12Mbps (including 45.45kbps), PROFIBUS address not required, integrated termination facilities (switches), operating temperature -20 to +60°C, dimensions: 106 x 55 x 33mm, supply: 19-28 VDC, 65mA, isolation class IP 20	360,-



UNMANAGED ETHERNET-SWITCHES

The industrial switches EN5-R (5-Port) and EN8-R are entry-level models which support the IEEE 802.3 or 802.3u with 10/100M full / half duplex and MDI/MDIX recognition. They are designed for operating temperature ranges of -10° up to 60°C and can also be deployed in rough industrial environments.

Order No.:	ETHERNET SWITCHES Technical Data	PRICE in Euro
VIPA 910-1EN50	Industrial-Switch EN5-R, 5x RJ45 10/100BaseTX full / half Duplex, supports IEEE 802.3 and IEEE 802.3u/x and automatic MDI/MDI-X recognition, redundant power supply for 12-45 VDC, IP30 aluminium housing for DIN rail mounting	110,-
VIPA 910-1EN80	Industrial-Switch EN8-R, 8x RJ45 10/100BaseTX full / half Duplex, supports IEEE 802.3 and IEEE 802.3u/x and automatic MDI/MDI-X recognition, redundant power supply for 12-45 VDC, IP30 aluminium housing for DIN rail mounting	145,-



MANAGED ETHERNET-SWITCHES

The Ethernet switches PN5-RD (5-Port) and PN8-RD (8-Port) are Managed Ethernet switches with integrated PROFINET functions. This makes it easier to integrate the PN switches into PROFINET oriented engineering systems and also support a variety of useful management functions such as IGMP Snooping, IEEE802.1Q VLAN, QoS, Port mirroring, SNMP, bandwidth management and warning by e-mail or relay output.

Order No.:	PROFINET SWITCHES Technical Data	PRICE in Euro
VIPA 911-2PN50	Industrial-Switch PN5-RD, PROFINET v2 Conformance Class B, Profinet diagnosis via GSD integration, Management functions such as IGMP Snooping, IEEE 802.1Q VLAN, QoS, RMON, SNMP, Port mirroring, PROFINET I/O parameters, I/O cyclic data, DCP, DHCP, Turbo Ring and Turbo Chain (recovery time < 20 ms)	360,-
VIPA 911-2PN80	Industrial-Switch PN8-RD, PROFINET v2 Conformance Class B, Profinet diagnosis via GSD integration, Management functions such as IGMP Snooping, IEEE 802.1Q VLAN, QoS, RMON, SNMP, Port mirroring, PROFINET I/O parameters, I/O cyclic data, DCP, DHCP, Turbo Ring and Turbo Chain (recovery time < 20 ms)	545,-

