

TOUCH PANEL COMPUTER

TPC-Series



The TPC touch control panel series of Advantech offers powerful, fanless PC's with very compact dimensions and an extensive interface equipment. As operating systems Windows 7, 8.1 und 10 Professional and others are supported.

With the powerful CORE i3 and CORE i7 CPUs is it possible to run big SCADA projects, databases and SOFT PLCs.

TPC-1282H-533AE € 1.870,-

12,1" TFT-Color, IP65, Touch, 1024 x 768 pix
 CPU: IntelCore i3-5010U, 2.10 GHz fanless, RAM: 4GB
 1x RS232, 1x RS232/422/485, 2x USB 3.0,
 2x GigabitLAN, 1x HDMI
 Cut-Out: 303 x 229 mm
 Supply: 24VDC
 Temp.: -20 ~ 60°C

OPTIONS: SSD, HDD, CFastCard, iDoor
 OS: Win 7, 8 & 10 PRO



TPC-1282H



TPC-1582H

TPC-1582H-433BE € 1.845,-

15" TFT-Color, IP65, Touch, 1024 x 768
 CPU: IntelCore i3 HASWELL 1.7 GHz fanless, RAM: 4GB
 1x RS232, 1x RS232/422/485, 2x USB 3.0,
 2x GigabitLAN, 1x HDMI
 Supply: 24VDC
 Cut-Out: 374.5 x 298.5mm

OPTIONS: SSD, HDD, CFastCard, iDOOR
 OS: Win 7,8 & 10 PRO



* see page 12



TPC-1782H-433AE € 2.260,-

17" TFT-Color, IP65, Touch, 1280 x 1024 pix
 CPU: IntelCore i3 HASWELL 1.7 GHz fanless, RAM: 4GB
 1x RS232, 1x RS232/422/485, 2x USB 3.0,
 2x GigabitLAN, 1x HDMI
 Supply: 24VDC
 Cut-Out: 400.8 x 334.3 mm

OPTIONS:SSD, HDD, CFastCard, iDOOR, CORE i7
 OS: Win 7, 8 & 10 PRO



TPC-1782H

All prices in euro excluding VAT

VISUALIZATION

TOUCH PANEL COMPUTER

Multi Touch-Series

AIONA Automation presents the new Multitouch Panels from Advantech: They were honored with the „iF product design award 2013“ and give proof of the technological top position of ADVANTECH. They include a lightweight magnesium housing and weigh about 35% less than comparable systems. The glassfront with 7H antiscratch coating guarantees longevity. The series has a efficient AMD T56 G CPU or a powerful CORE i3 CPUs and will be the perfect combination with Windows 10 and Zenon.

AIONA Automation delivers all PCs on request with the worldwide first multi-touch-optimized visualization from the automation specialist COPA-DATA at a reduced bundleprice.

TPC-1581WP-433AE

€ 2.245,-

15.6" Widescreen-Multitouch, anti-scratch, IP65, 1366 x 768 pix
CPU: IntelCore i3 HASWELL 1,7 Ghz fanless, RAM: 4 GB DDR3,
1x RS232, 1x RS232/422/485, 2x USB 3.0,
2x GigabitLAN, 1x HDMI, Audio Line Out
Supply: 18-32V
Cut-out: 412.4 x 261.7mm (±1mm)

OPTIONAL: SSD, HDD, CFastCard, iDoor
OS: Win 7 & 10 PRO

TPC-1581WP



TPC-1840WP-T3AE

€ 2.160,-

18.5" Widescreen-Multitouch, anti-scratch, IP65, 1366 x 768 pix
CPU: AMD G T56E DualCore fanless, RAM: 4 GB DDR3,
3x RS232, 1x RS-422/285, 2x USB, 2x Gigabit LAN,
1x HDMI, 1x CFast-Slot, 1x MiniPClex
Supply: 18-32V
Cut-out: 479 x 300mm (±1mm)

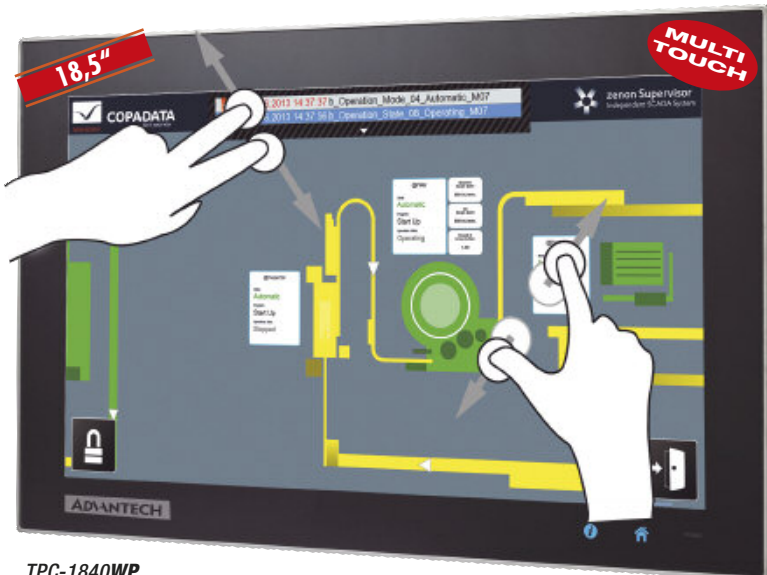
OPTIONS: SSD, HDD, CFastCard
OS: Win 7, 8 & 10 PRO, WES7

TPC-1881WP-433AE

€ 2.905,-

18.5" Widescreen-Multitouch, anti-scratch, IP65, 1366 x 768 pix
CPU: IntelCore i3 HASWELL 1,7 Ghz fanless, RAM: 4 GB DDR3,
1x RS232, 1x RS232/422/485, 2x USB 3.0,
2x GigabitLAN, 1x HDMI, Audio Line Out
Vers.: 18-32V
Ausschnitt: 479 x 300mm (±1mm)

OPTIONAL: SSD, HDD, CFastCard, iDoor
OS: Win 7, 8 & 10 PRO



TPC-1840WP

TPC-2140WP-T3AE

€ 2.380,-

21.5" Widescreen-Multitouch, anti-scratch, IP65, 1920 x 1080 pix
CPU: AMD G T56E DualCore fanless, RAM: 4 GB DDR3,
3x RS232, 1x RS-422/285, 2x USB, 2x Gigabit LAN,
1x HDMI, 1x CFast-Slot, 1x MiniPClex
Supply: 18-32V
Cut-out: 551.1 x 345.7mm (±1mm)

OPTIONS: SSD, HDD, CFastCard
OS: Win 7, 8 & 10 PRO, WES7



TPC-2140WP

All prices in euro excluding VAT