

OPERATOR SYSTEMS

TD/OP-Textpanels

VIPA TEXT DISPLAY

The TD03 is a small, compact text display for showing messages about current working conditions, for changing process parameters and setting flags with the built-in buttons. An S7®-MPI port can be used to connect it to all Siemens



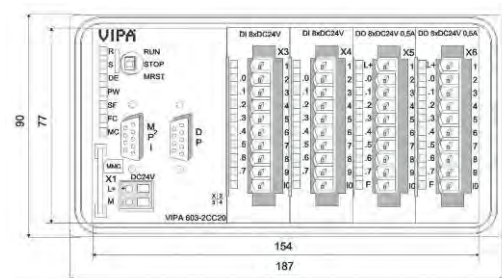
VIPA OPERATOR PANEL

The operator panel OP03 can be programmed by ProTool SW or OP Manager. It serves for the comfortable display and update of process values and the output of messages. An S7®-MPI port can be used to connect it to all Siemens S7-300/400® PLCs and VIPA series 100/200/300V PLC's.



VIPA COMMANDER COMPACT

VIPA CommanderCompact CC03 is an operator control panel with a text display with 2x20 marks and an integrated PLC CPU, programmable with WinPLC7 by VIPA or with STEP®7 by Siemens. The CPU of the CC03 disposes more than 16 KB of program memory and 24 KB of loading memory. In addition, 16 digital inputs and outputs are on board.



S7-300/400® PLCs and VIPA series 100/200/300V PLC's. The configuration is done with the VIPA TD-Wizard. The generated parameters and data blocks are directly loaded in the PLC. The TD itself contains no project data.

VIPA 603-1TD00

€ 174,-

TD03-text display, 2x20 sign, LCD, 4 F-buttons + Shift, Up/Down Arrow keys, ESC, ENTER, text memory in PLC (data block), Project development by TD-Wizard.

Interface: MPI.

Suitable for VIPA 100/200/300V and Siemens S7-300 / 400.

Dimensions: 172 x 88 x 32mm, cut-out: 154 x 78mm, Weight: 750g, mounting: in the device integrated, captive rocker arms.

Supply: 18-32VDC/120 mA. Including MPI connection cable to the PLC VIPA 950-0KB50, Length 2.5 m with PG and diagnosis jack.

Up to 7 OPs are connectable at the same time to a PLC. As a specific feature the STEP®7 functions StatVAR and SteuVAR are implemented. For project transmission, the VIPA Greencable 950-0KB00 is used.

VIPA 603-10P00

€ 264,-

TD03-text display OP03, 2x20 chars, LCD, 4 F-buttons, Numeric Block, ±, arrow keys, ESC, ENTER. Project memory: 256kByte project programming via ProTool by Siemens, interface: MPI

Suitable for VIPA 100/200/300V, Siemens S7-300/400.

Dimensions: 172 x 88 x 32mm, cut-out: 154 x 78mm, Weight: 750g, mounting: in the device integrated, captive rocker arms.

Supply: 18-32VDC/120 mA.

Including MPI connection cable to the PLC VIPA 950-0KB50, Length 2.5 m with PG and diagnosis jack.

The CC03 can be extended with up to four 100V/200V modules. The programming can be done via Green Cable from VIPA or via standard MPI communication with MPI interface. The alignment on high accessibility, functionality and easy project development allows the various applications with the CC03.

VIPA 603-1CC23

€ 752,-

OP03-text display OP03, 2x20 chars, LCD, 4 F-buttons, Numeric block, ±, arrow keys, ESC, ENTER. Project memory: 128kByte project programming via ProTool by Siemens, interface: MPI.

With integrated STEP®7/S7-300 CPU, 16 KB RAM / 24 KB loading memory, 16 digital inputs/16 digital outputs (24VDC/1A).

Dimensions: 172 x 88 x 32mm, cut-out: 154 x 78mm. Weight: 750g, mounting: in the device integrated, captive rocker arms.

Supply: 18-32VDC/120 mA.

Including MPI connection cable to the PLC VIPA 950-0KB50, Length 2.5 m with PG and diagnosis jack..

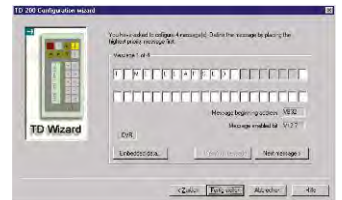
VIPA 660-0KB00

€ 69,-

Peripheral-extension cable CC03 for up to 4 expansion modules EM123 or system 200V. Length: 0.5 m.

PROJECT DEVELOPMENT

The project development for the TD03 is done with TD-Wizard, that generates one DB, which holds the suitable data after the registration of the TD03 through an SFC.



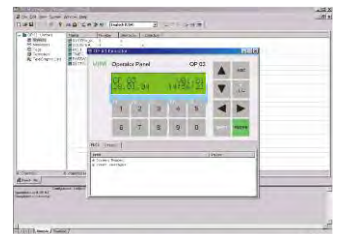
PROJECT DEVELOPMENT

The project development of the OP03 can be done with the OP manager of VIPA. Here, even complicated navigations can be realized. The OPManager has an integrated emulator which helps you to check all functions without additional HW on an emulated panel. The transfer of the project can be done with MPI. It is also possible to use Protool by Siemens.

VIPA SW300 01LA OP-MANAGER

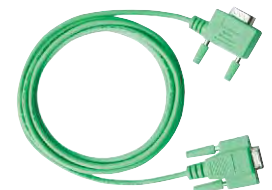
€ 309,-

Programming-Tool for OP03



DIMENSIONS TD03/OP03

Cut-out: 156 x 78mm
Outside: 173 x 88mm
Deepness: 32mm



VIPA 950-0KB00

€ 55,-

VIPA "Green Cable" programming cable for TD/OP03 and PG/AG download cable for VIPA 100/200/300V.