



Sealtite NMFG blue:
All-plastic, medium mechanical strength, food grade conduit..

Sealtite NMFG is a conduit specially made for the food industry. The smooth jacket of FDA approved compound is easily cleaned and does not promote bacteria growth. This makes the NMFG perfectly applicable in the food and pharmaceutical industry.

Classification according NEN-EN-IEC 61386:
Compression resistance: Class 1, Very Light (125 N).
Impact resistance: Class 3, Medium (2 J).
Tensile strength: Class 4, Heavy (1000 N).
Protection class: IP 67 (dust-proof, water-tight).

Material & Construction:

Construction: Thick smooth thermoplastic (PVC compound) core reinforced with PVC spiral.
Cover specifications: PVC, lead-free according to RoHS, specially formulated for food and beverage applications per FDA CFR 21 and NSF 51 requirements.
Temperature: -35 °C to +50 °C, intermittent up to +70 °C.
Colour: blue.



Spiral reinforced PVC

**ANAMET
 ALL-PLASTIC
 CONDUITS**

**CONDUIT
 TYPE NMFG
 BLUE**

Sealtite	Diameter		Bending radius		Standard carton		Small carton		Reels		Weight (Kg/m)	
	Size (Inch)	Inside (mm)	Outside (mm)	Static (mm)	Dynamic (mm)	Metre	Article No.	Metre	Article No.	Metre		Article No.
						Blue			Blue		Blue	
3/8"	12,6	17,8	70	100	30	359.012.0	-	-	-	-	-	0,12
1/2"	16,0	21,1	100	135	30	359.016.0	-	-	-	-	-	0,18
3/4"	21,1	26,4	130	175	30	359.020.0	-	-	-	-	-	0,28
1"	26,8	33,1	180	220	30	359.026.0	-	-	-	-	-	0,34
1.1/4"	35,4	41,8	225	270	15	359.035.0	-	-	-	-	-	0,46
1.1/2"	40,3	47,8	255	320	15	359.040.0	-	-	-	-	-	0,6
2"	51,6	59,9	310	400	15	359.050.0	-	-	-	-	-	0,8

The fittings for Sealtite NMFG are outlined on page 8-12. Sealtite fittings illustrated in chapter 5 can also be used.



Size Sealtite	Inch	-	-	3/8"	1/2"	3/4"	1"	1 1/4"	1 1/2"	2"	-	-	-
Fittings	ISO	-	-	M16 - M20	M20	M25	M32	M40	M50	M63	-	-	-
	PG	-	-	11 - 13,5	16	21	29	36	42	48	-	-	-
	NPT	-	-	1/2"	1/2"	3/4"	1"	1 1/4"	1 1/2"	2"	-	-	-



Anaconda stainless steel AISI-316 "food fitting" for Anaconda Sealtite.

These special stainless steel AISI-316 Anaconda fittings can be used with all types of Anaconda Sealtite (except CNP) and offer the highest corrosion resistance. These stainless steel are specifically smooth and give a good protection especially for the pharmaceutical and food industry.

Material & Construction:

Construction: Stainless steel (AISI-316) fitting, consisting of 6 parts (lower seal, counter nut, upper seal, clamping ring, ferrule and body).

Material: Counter nut and body are stainless steel (AISI-316) and the ferrule is from nickel plated brass. Clamping ring and insert are from PA6 (red for ISO metric).



The blue rubber upper and lower seals are made from FDA approved TPE

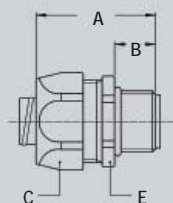
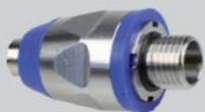
Special approvals: Special TPE seals, halogen-free, specially formulated for food and beverage applications per FDA guideline CFR 21.

Temperature: -45 °C till +105 °C continuous.

Protection class: IP 68 according EN 60529, IP69K according DIN 40050-9 (till 40 Bar high pressure).

Colour: Metal.

ISO straight food grade fitting, male, stainless steel (AISI-316).



Thread ISO	Sealtite Size (inch)	Min. Internal Bore (mm)	Dimensions in mm					Standard Package	Article Number	Weight (Kg/100)
			A	B	C	D	E			
M16 x 1,5	3/8"	10,4	48	12	27	-	31	10	832.016.9	6,6
M20 x 1,5	1/2"	13,8	50	13	30	-	34	10	832.020.9	8,0
M25 x 1,5	3/4"	18,5	57	15	36	-	41	5	832.025.9	11,8
M32 x 1,5	1"	23,8	68	15	46	-	53	5	832.032.9	22,8
M40 x 1,5	1.1/4"	31,8	75	16	54	-	62	2	832.040.9	34,2
M50 x 1,5	1.1/2"	36,8	81	18	63	-	70	1	832.050.9	38,6
M63 x 1,5	2"	47,8	88	20	77	-	85	1	832.063.9	76,6

**ANAMET
ALL-PLASTIC
CONDUITS**

**FOOD GRADE
FITTINGS FOR
NMFG
IP 68**



Anaconda **hygienic design**, mirror-polished “elbow food fitting” for Anaconda Sealtite.

Anaconda hygienically designed mirror polished elbow fittings can be used with all types of Anaconda Sealtite (except CNP) and offer a high corrosion resistance. Because of the special mirror-polished treatment these fittings are specifically smooth and give a good protection especially for the pharmaceutical and food industry. The mirror polished treatment reduces the risk of bacterial formation and permits easy cleaning.



Material & Construction:

Construction: Nickel plated brass fitting, consisting of 4 parts (counter nut, clamping ring, ferrule and body).

Material: Counter nut, body and ferrule are nickel plated brass with exception of size 3/8" till 1" where the ferrule is from galvanised steel. Clamping ring and inserts are made from PA6 red for ISO metric.

Temperature: -45 °C till +105 °C continuous.

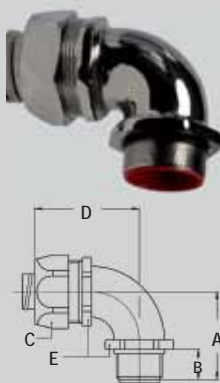
Protection class: IP 67 (dust-proof, water-tight).

Colour: Metal.

**ANACONDA
SEALTITE®
SPECIAL**



ISO 90° fitting, male, mirror-polished nickel plated brass.



Thread	Sealtite Size (inch)	Min. Internal Bore (mm)	Dimensions in mm					Standard Package	Article Number	Weight (Kg/100)
			A	B	C	D	F			
M16 x 1,5	5/16"	8,3	32	12	26	42	22	10	818.915.1	8,2
M20 x 1,5	5/16"	8,3	33	13	26	42	22	10	818.914.1	8,4
M16 x 1,5	3/8"	10,2	32	12	26	42	22	10	818.916.1	8,2
M20 x 1,5	3/8"	10,2	33	13	26	42	22	10	818.917.1	8,4
M20 x 1,5	1/2"	13,9	36	13	29	43	27	10	818.920.1	12,6
M25 x 1,5	3/4"	18,5	43	15	35	48	33	5	818.925.1	19,2
M32 x 1,5	1"	23,8	48	15	45	59	42	5	818.932.1	31,6

**LIQUID-TIGHT
FITTINGS FOR
SEALTITE
IP 66**

ISO 90° fitting, compact, male, nickel plated brass.



Thread	Sealtite Size (inch)	Min. Internal Bore (mm)	Dimensions in mm					Standard Package	Article Number	Weight (Kg/100)
			A	B	C	D	E			
M40 x 1,5	1.1/4"	33,3	46	13	53	53	52	2	712.940.1	40,1
M50 x 1,5	1.1/2"	38,0	52	14	62	57	60	2	712.950.1	57,5
M63 x 1,5	2"	49,0	62	16	76	68	72	2	712.963.1	90,6