

**ANAMET
ALL-PLASTIC
CONDUITS**

**CONDUIT
TYPE MPC
GREY**



Anamet MPC grey:
Light to normal mechanical strength,
extremely flexible.

Type MPC is a plastic conduit for light and normal mechanical strength. The MPC is very flexible and has a low bending radius. Type MPC is especially for tight static applications such as in light machinery and in the transport industry.

Material & Construction:

Construction: Plastic coated metal spiral with thin wall convoluted thermoplastic (PVC compound) cover.

Cover specifications: PVC, lead-free according to RoHS.

Resistant against: Chemicals, bases and acids.

Temperature range: -20 °C till +70 °C, intermittent up to +80 °C.

Colour: Grey.



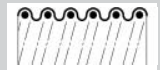
Classification according NEN-EN-IEC 61386:

Compression resistance: Class 3, Medium (750 N).

Impact resistance: Class 3, Medium (2 J).

Tensile strength: Class 1, Very light (100 N).

Protection class: IP 67 (dust-proof, water-tight).



Spiral reinforced PVC

MPC	Diameter		Bending radius		Standard carton		Small carton		Reels		Weight (Kg/m)
	Size	Inside	Outside	Static	Dynamic	Metre	Article No.	Metre	Article No.	Metre	
DN	(mm)	(mm)	(mm)	(mm)		Grey		Grey		Grey	
9	10	14	14	40	50	620.309.0	10	620.309.1	-	-	0,08
11	13	17	17	48	50	620.311.0	10	620.311.1	-	-	0,12
13	15	19	19	55	50	620.313.0	10	620.313.1	-	-	0,13
16	16	21	21	60	50	620.316.0	10	620.316.1	-	-	0,14
21	21	27	27	75	50	620.321.0	10	620.321.1	-	-	0,26
29	30	36	36	100	25	620.329.0	10	620.329.1	-	-	0,35
36	38	45	45	124	25	620.336.0	10	620.336.1	-	-	0,54
42	44	52	52	143	25	620.342.0	10	620.342.1	-	-	0,67
48	48	56	56	154	25	620.348.0	10	620.348.1	-	-	0,70

The fittings for Anamet MPC are outlined on pages 8-15 till 8-17.



Size MPC/MPU	DN	-	9	11	13	16	21	29	36	42	48	-	-
Fittings	ISO	-	M16	M20	-	M25	M32	M40	M50	-	M63	-	-
	PG	-	9	11	13,5	16	21	29	36	42	48	-	-
	NPT	-	-	-	-	-	-	-	-	-	-	-	-



Anamet MPU blue:
Light to normal mechanical strength,
extremely flexible, chemical resistant.

Type MPU is a Polyurethane conduit for light and normal mechanical strength. The MPU is very flexible and has a low bending radius. Type MPU is often used for tight static applications such as light machinery, switchboxes and in the transport industry, especially where also a higher chemical resistance is required.

Material & Construction:

Construction: Plastic coated metal spiral with thin wall convoluted thermoplastic (TPU compound) cover.

Cover specifications: Polyurethane, halogen-free, lead-free according to RoHS.

Resistant against: Chemicals, mineral oils and greases.

Temperature range: -40 °C till +90 °C, intermittent up to +125 °C.

Colour: Blue.

Classification according NEN-EN-IEC 61386:
Compression resistance : Class 3, Medium (750 N).
Impact resistance : Class 3, Medium (2 J).
Tensile strength : Class 1, Very light (100 N).
Protection class : IP 67 (dust-proof, water-tight).



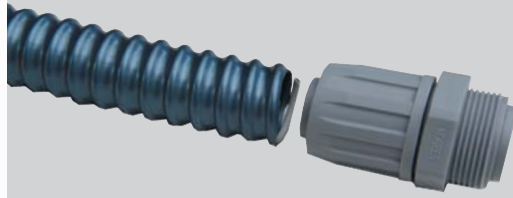
Spiral reinforced TPU

MPU	Diametre		Bending radius		Standard carton		Small carton		Reels		Weight (Kg/m)
	Size	Inside	Outside	Static	Dynamic	Metre	Article No.	Metre	Article No.	Metre	
DN	(mm)	(mm)	(mm)	(mm)		Blue		Blue		Blue	
9	10	14	14	40	50	620.409.0	10	620.409.1	-	-	0,08
11	13	17	17	48	50	620.411.0	10	620.411.1	-	-	0,12
13	15	19	19	55	50	620.413.0	10	620.413.1	-	-	0,13
16	16	21	21	60	50	620.416.0	10	620.416.1	-	-	0,14
21	21	27	27	75	50	620.421.0	10	620.421.1	-	-	0,26
29	30	36	36	100	25	620.429.0	10	620.429.1	-	-	0,35
36	38	45	45	124	25	620.436.0	10	620.436.1	-	-	0,54
42	44	52	52	143	25	620.442.0	10	620.442.1	-	-	0,67
48	48	56	56	154	25	620.448.0	10	620.448.1	-	-	0,70

The fittings for Anamet MPU are outlined on pages 8-15 till 8-17.



Size MPC/MPU	DN	-	9	11	13	16	21	29	36	42	48	-	-
Fittings	ISO	-	M16	M20	-	M25	M32	M40	M50	-	M63	-	-
	PG	-	9	11	13,5	16	21	29	36	42	48	-	-
	NPT	-	-	-	-	-	-	-	-	-	-	-	-



Anamet plastic fittings for Anamet plastic conduit MPC / MPU.

These plastic Anamet fittings are specially made for the combination with Anamet plastic conduit type MPC & MPU. This fitting offers an economical solution in situations where a medium degree of protection (IP 54) is required.

Material & Construction:

Construction: One piece swivel fitting with integrated ferrule.

Material: PP (Polypropylene).

Temperature: -10 °C till +110 °C continuous.

Protection class: IP 54.

Colour: Grey.



ISO straight fitting, male swivel, plastic (PP).



Thread	MPC/MPU DN	Min. Internal Bore (mm)	Dimensions in mm					Standard Package	Article Number	Weight (Kg/100)
			A	B	C	D	E			
M16 x 1,5	9	8,8	44	9	20	-	-	50	651.316.2	0,7
M20 x 1,5	11	11,1	48	9	24	-	-	50	651.320.2	0,9
M25 x 1,5	16	14,8	52	10	30	-	-	50	651.325.2	1,5
M32 x 1,5	21	19,4	55	11	36	-	-	25	651.332.2	2,1
M40 x 1,5	29	27,9	58	12	46	-	-	25	651.340.2	3,4
M50 x 1,5	36	35,6	61	13	55	-	-	25	651.350.2	4,9
M63 x 1,5	48	45,9	63	14	65	-	-	10	651.363.2	7,0



Pg straight fitting, male swivel, plastic (PP).



Thread	MPC/MPU DN	Min. Internal Bore (mm)	Dimensions in mm					Standard Package	Article Number	Weight (Kg/100)
			A	B	C	D	E			
Pg 9	9	8,8	44	9	20	-	-	50	650.509.2	0,7
Pg 11	11	11,1	48	9	24	-	-	50	650.511.2	0,9
Pg 13,5	13	13,0	50	10	27	-	-	50	650.513.2	1,2
Pg 16	16	14,8	52	10	30	-	-	50	650.516.2	1,5
Pg 21	21	19,4	55	11	36	-	-	25	650.521.2	2,1
Pg 29	29	27,9	58	12	46	-	-	25	650.529.2	3,4
Pg 36	36	35,6	61	13	55	-	-	25	650.536.2	4,9
Pg 42	42	41,9	62	13	62	-	-	25	650.542.2	6,1
Pg 48	48	45,9	63	14	65	-	-	10	650.548.2	7,0



Box bracket fitting, swivel, plastic (PP).



Thread	MPC/MPU DN	Min. Internal Bore (mm)	Dimensions in mm					Standard Package	Article Number	Weight (Kg/100)
			A	B	C	D	E			
-	9	8,8	44	6	29	12,5	-	50	650.609.3	0,8
-	11	11,1	48	6	37	13	-	50	650.611.3	1,0
-	13	13,0	50	6	37	14	-	50	650.613.3	1,3
-	16	14,8	52	6	37	15,5	-	50	650.616.3	1,6
-	21	19,4	55	6	43	16,5	-	25	650.621.3	2,1
-	29	27,9	58	7	53	17	-	25	650.629.3	3,3