

CONNECTORS OVERVIEW

A complete range of innovative solutions
for any industrial application

THE TRADITION OF INNOVATION SINCE 1945

ILME designs and manufactures complete solutions for industrial connections.

Headquartered in Milan and with subsidiaries in the key countries driving the progress of automation, ILME is an industry leader in the main world markets.

People are vital to success and growth at ILME, sharing a passion for innovation, utmost responsibility and participation.

The Company is committed to developing technology in the areas that most impact the future of the industries it serves: safe and high quality wiring, research on the most suitable materials, rapid delivery time and readily available services while striving for energy saving and environmental protection.

COMMITMENT TO INDUSTRY



Technological innovation is the main pillar of ILME competitiveness.

In the electrical connection sector of industrial automation, characterized by the need for top performance and reliability, ILME is an acknowledged leader with its own patents and a global benchmark supplier of major companies worldwide.

ILME offers a fully integrated range of high-quality products and services for every type of connection to suit any application requirements.

FIELDS OF APPLICATION



✓
AUTOMATION



✓
MARINE



✓
ENERGY



✓
OUTDOOR



✓
AIRPORT



✓
LIGHT
& SOUND



✓
AGRONOMY



✓
FOOD
& BEVERAGE



✓
HEAVY
VEHICLES



✓
CHEMICAL



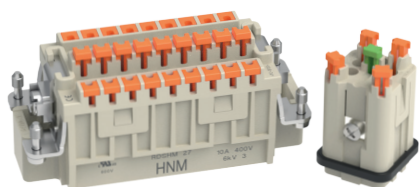
✓
PLASTIC



✓
RAILWAY



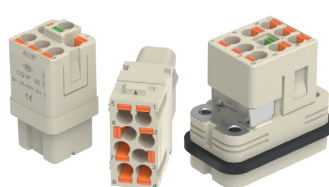
TECHNOLOGY PORTFOLIO



SQUICH® series

THE CONNECTOR FOR EVERYONE

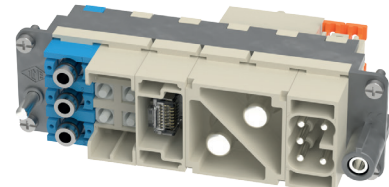
Quick, easy and safe connections without tools, saving up to 50% of wiring time, vibration proof. Available across all sizes, from the most compact to the highest density.



AXYR® series

WIRING IN AXIS

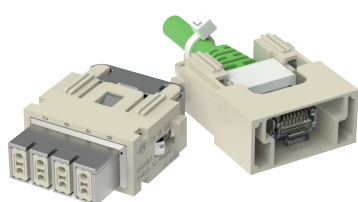
Easy, tool-less and compact spring push-in termination, which equals the crimp connectors in high density. Resistant to mechanical stress and vibrations.



MIXO series

BUILD YOUR CONNECTOR

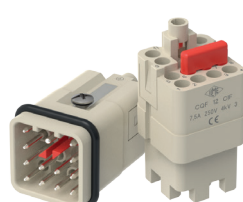
Modular and flexible system allowing the design of custom connectors. An easy-to-handle, fast mounting and space saving solution.



DATA connectors

ETHERNET-BASED RELIABILITY

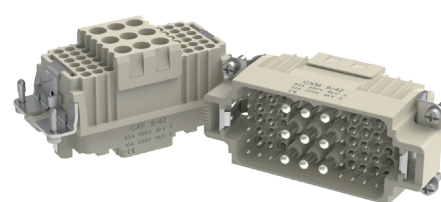
Standardized, compact and easy-to-wire modules for high-speed, shielded Ethernet connection.



CQ 12 inserts

COMPACTNESS MEETS PERFORMANCE

Compact solution for high density needs. Reliable, 16 coding possibilities perfect for small motors with bridges for star/delta configuration.



COMBINED connectors

ALL-IN-ONE SOLUTION

Space-saving design combining power and signal connections. The vibration-resistant crimp termination guarantees a reliable performance in any automation environment.



C-TYPE series

THE CLASSIC CHOICE

Enclosures designed for reliable and durable connections: stainless steel levers, profiled gaskets, wide range of uses.



IL-BRID series

SOFT CLOSING, STRONG HOLD

The perfect combination of stainless steel and thermoplastic material working together. Also available with self-closing covers.



V-TYPE series

EXTRA TOUGH

Enclosures with vertical closing levers in stainless steel to assure a stable and IP67 watertight seal.



CK-CKA-MKA series

THE MOST COMPACT

Thermoplastic and metallic enclosures in small size for standard or aggressive environments.



CZ7 series

RIGID COUPLING

Enclosures with rigid stainless steel lever to assure an IP67 watertight seal.



CQ 08 series

COMPACT SIZE, BIG PERSONALITY

Metal and insulating enclosures, size "32.13". Space saving design for handling any wiring combination in tight spaces.



IP68 series

THE DIVING MASTER

Corrosion proof aluminium enclosures, combining IP68 degree of protection, EMC shielding and high mechanical robustness.



W-TYPE series

A CORNERSTONE AGAINST CORROSION

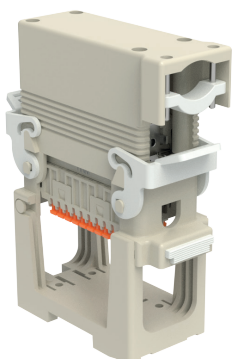
Anticorrosive coating for aggressive environments. Equipped with special gaskets, pegs and stainless steel levers to achieve maximum performance.



E-Xtreme® series

PROTECTION AND BEYOND

ILME patented titanium plasma protection. Corrosion proof enclosures, resistant up to 3.000 hours in salt spray tests.



COB series

FUNCTIONALITY COUNTS

For multipole connectors inside cabinets allowing fast mounting and easy wiring control thanks to the tilting mechanism.



BIG series

THE SPACE YOU HAVE ALWAYS NEEDED

Plenty of space to allow easy wiring and even the installation of P.C. boards inside the hood. The ideal solution for XXL needs.



CENTRAL LEVER series

EASY ACCESS FOR ROBOTICS

Enclosures designed for industrial applications with limited installation space. Easy handling granted by the locking device with a single stainless steel lever.



T-TYPE series

THE HIGH-END PLASTIC SOLUTION

Insulated thermoplastic enclosures for standard and aggressive environments: mechanically robust, lightweight, antistatic and corrosion resistant.



HYGIENIC series

SAFE FOR FOOD

Thick and solid thermoplastic enclosures with special gaskets and metal-detectable levers resistant to most used chemicals and cleaning solutions used in the food industry. ECOLAB® approved.



LS-TYPE series

ON STAGE

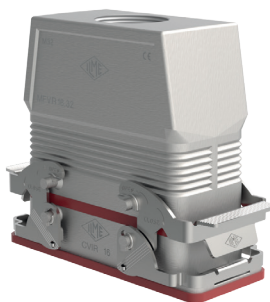
Completely black in color, the LS-TYPE is the ideal solution for the entertainment industry, designed to house all types of connector inserts.



EMC series

NO INTERFERENCES

Enclosures with a conductive coating and special conductive gaskets assuring highly effective EMC shielding.



180 °C series

THE HEAT SHIELD

Heat resistant gaskets and stainless steel levers. To be used with PPS inserts to withstand temperatures up to 180 °C.



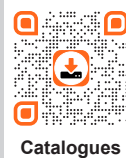
HNM series

IN AND OUT

Enclosures and inserts with special antifriction treatment, tested up to 10.000 mating cycles.



ILME S.p.A.
Via Marco Antonio Colonna, 9
20149 Milano - Italy
www.ilme.com



XDGVANCN 323