

## for SQUICH® terminal

for insert series:

CDSH  
CSAH  
CSH  
CSH S  
CMSH

page:

86 - 91  
99 - 103  
110 - 115  
122 - 127  
136 - 144

## SQUICH® reopening tool



description

part No.

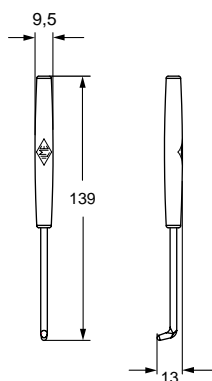
reopening tool  
for **SQUICH®** actuator button

CSHES

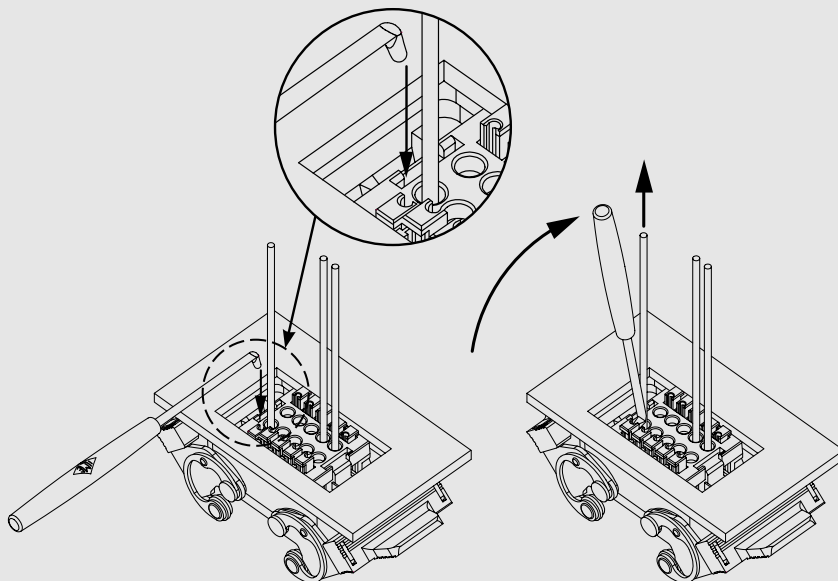
It allows the release of the connection from a SQUICH® terminal without disassembly of the connector insert from the bulkhead mounting housing, by operating from the accessible rear side of the control panel.

With mains power disconnected (connector not under voltage), the smoothed hook-shaped tool tip is inserted in the slot of the actuator button head of the corresponding terminal, then by a delicate tilt towards the centre of the connector, the tools acts as a lifting lever for the actuator button, releasing the wire.

**CAUTION:** Not suitable for SQUICH® terminals of CKSH inserts or MIXO CX 05 SH modular inserts.



## Reopening tool use instructions



Tools and accessories for crimp contacts

for insert series:

CJ (RJ45)  
MIXO (RJ45)

page:

223  
304 - 307

manual crimp pliers



shielded cable stripper



description	part No.	part No.
RJ45 CJ series plug insert crimp pliers basic tool YAMAICHI Y-ConTool-11 mod. with plug insert inserter	CJPZ Y	
Y-ConTool-20 cable stripper cuts the cable sheath and releases the wires in a single operation		CJST



Watch  
our CX 8 JM  
online  
tutorial

RJ45 plug insert crimp pliers mounting instructions

1

2

3

4

5

6

7

8

9

10

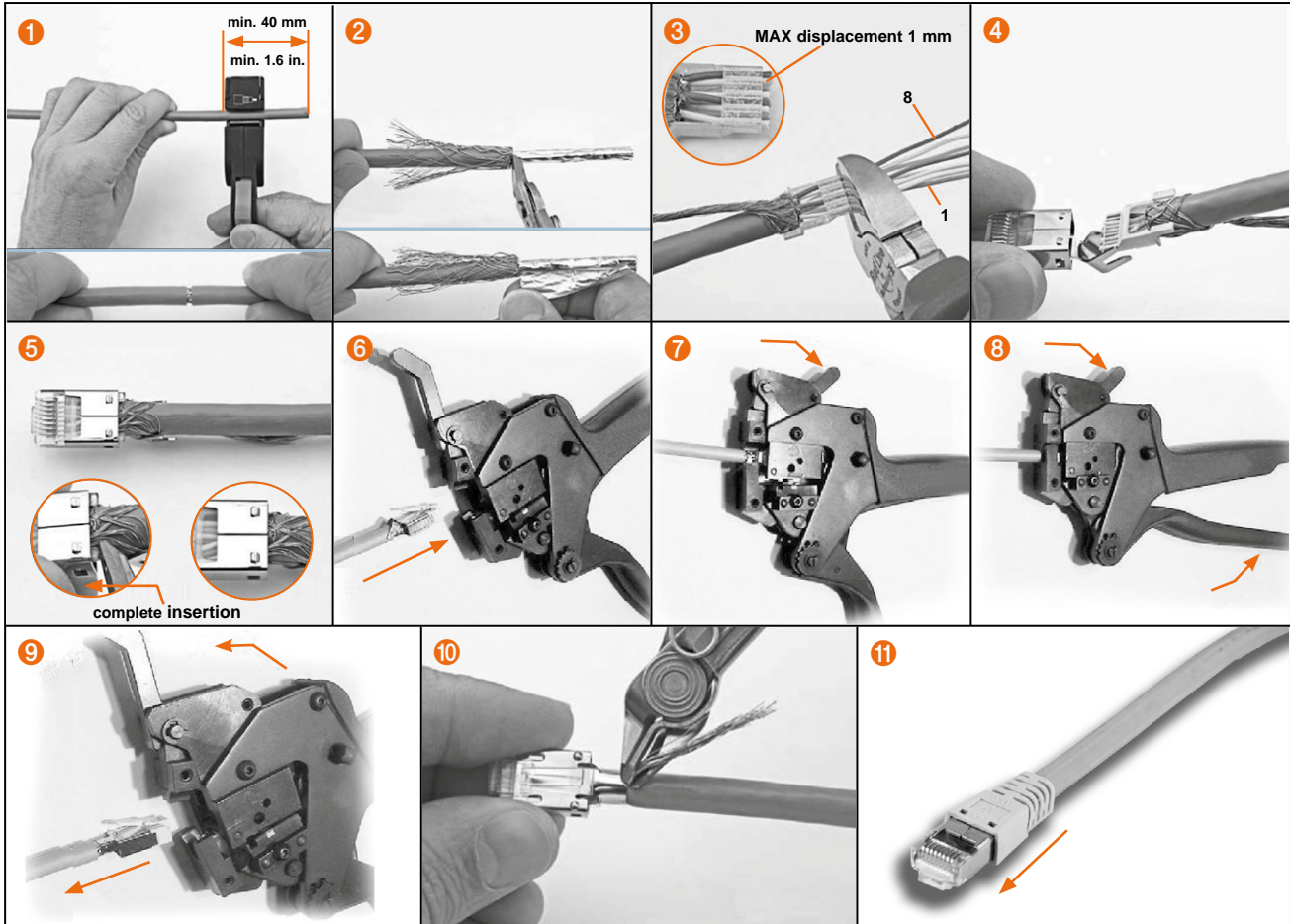
11

Crimping tools

Tools and accessories for crimp contacts

inserts: MIXO (RJ45) CX 8 J6M	page: 302	manual crimp pliers	shielded cable stripper
description		part No.	part No.
RJ45 CJ series plug insert crimp pliers		CJPZ T	
cable stripper cuts the cable sheath and releases the wires in a single operation			CJST

RJ45 plug insert crimp pliers mounting instructions



Watch  
our  
online  
tutorial

Tools and accessories for crimp contacts

inserts:	page:	manual IDC pliers
MIXO (RJ45) CX 8 J6IM	302	
description		part No.
wrench pliers for CX 8 J6IM		CJPW K

CX 8 J6IM IDC plug insert crimp pliers mounting instructions

1

2

3

4

5

6

Connection					Application		
RJ45 PIN No.	Colour Code T568		DIN 47100	Industrial PROFINET	10BT/ 100BT	1 Gigabit 10 Gigabit Ethernet	Token Ring ISDN/So
	A	B					
1	WH-GN	WH-OG	WH	YE	•	•	
2	GN	OG	BN	OG	•	•	
3	WH-OG	WH-GN	GN	WH	•	•	•
4	BU	BU	YE	-		•	•
5	WH-BU	WH-BU	GY	-		•	•
6	OG	GN	PK	BU	•	•	
7	WH-BN	WH-BN	BU	-		•	
8	BN	BN	RD	-		•	

Legend

- BN = brown
- BU = blue
- GN = green
- GY = grey
- OG = orange
- PK = pink
- RD = red
- WH = white
- YE = yellow



Watch our online tutorial



CX BES extraction tool

extraction tool for MIXO BUS connectors



description

part No.

tool for the extraction of the shielded connectors  
(coax **CX 01 BF/M** page 291, **CX 01 BCF/M** page 289,  
**CX 04 BF/M** page 291, **CX 08 BF/M** page 293)  
from either the **CX 1/2 BDF/M** adapters (page 243)  
or the MIXO BUS **CX 02 BF/M** (page 290) modular units.

**CX BES**