

# MG-CPM

## Terminal block markers

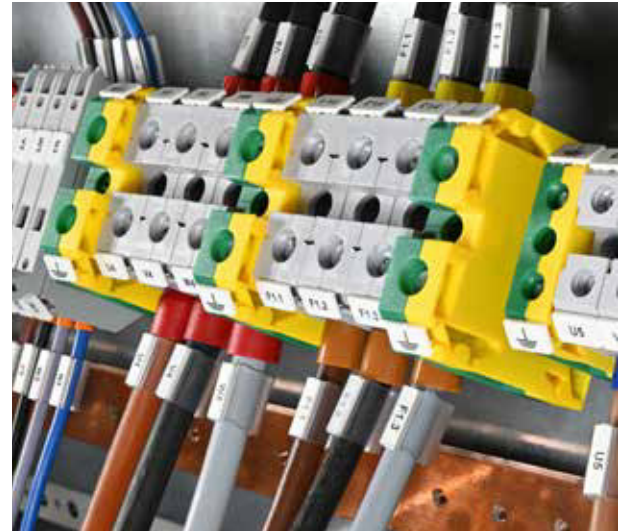
MG-CPM terminal block markers are available in versions to suit the particular clip formats of the most widely used products.

Depending on type, markers are presented as joined strips at a set or flexible pitch or as separate markers for convenient individual insertion on mixed pitch terminal block assemblies.

MG-CPM markers provide an elevated mechanical robustness, high dimensional stability and are Halogen Free.

Printing a complete sheet of MG-CPM markers on MARKINGENIUS® thermal transfer printers takes around 10 seconds, while to optimise application time, additional data - job details, location, etc - may be printed on the stems.

Part-used sheets are easily accommodated to avoid wastage. MG-CPM terminal block markers are available in versions to suit the particular clip formats of the most widely used products.



THERMAL TRANSFER FOR SHEET MEDIA

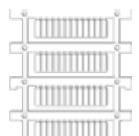


### PURCHASE SEPARATELY

Directly on terminal blocks using the rear mounted clips.

### SUPPLIED

templates and PET supports ..... page 12  
 ribbons ..... page 13  
 cross reference chart ..... page 182



# MG-CPM



Family	Terminal blocks	Profile	Size mm	Pitch mm	Strip form	Type			Markers per sheet	Quantity	Template	SW code
						white PC10200WH	yellow PC10400YE	NEW blue MD				
MG-CPM-01	CEMBRE, Weidmüller, IMO, Entrelec, Wago, Allen Bradley, Conta Clip, Klemsan, Morsettitalia, Woertz, Connectwell, Rockwell		3 x 10	3,5	S	41092		41062-MD	80	2.000	991011	15
			5 x 7	5,1	S	41094	41044	41064-MD	56	1.960	991008	13
			5 x 10	5,1	S	41090N	41040N		56	1.960	991011	14
		M			41098	41048	41068-MD	56	1.960	991011	14	
			5 x 12	5,1	M	41099			56	1.960	991011	19
			5 x 15	5,1	S	41091N	41041N		48	1.680	991011	16
		M			41095	41045	41065-MD	48	1.680	991011	17	
M	8 x 10	8	M	41096	41046		32	1.120	991011	18		
MG-CPM-02	CEMBRE, Weidmüller WDK & WDU, Allen Bradley, Conta Clip, Klemsan, Entrelec, Wago, Woertz		5 x 10	5,1	S	41190N	41140N	41160N-MD	48	1.680	991011	22
MG-CPM-03	Wago, Entrelec, Cabur, Phoenix Contact, Connectwell		5 x 10	5	S	41291		41261-MD	56	1.960	991011	25
			5 x 10	5	M	41293		41263-MD	56	1.960	991011	25
MG-CPM-04	Phoenix Contact UK, UT & ST (frontal mounting), Connectwell, Siemens 8WH (clamp, frontal mounting), Cabur, Entrelec, Wago, Omron, Finder		3 x 10	3,5	S	41392		41362-MD	80	2.000	991011	43
			5 x 10	5,2	S	41390N	41340N		48	1.680	991011	42
			5 x 10	5,2	M	41395		41365-MD	48	1.680	991011	31
			6 x 10	6	M	41391		41361-MD	48	1.344	991011	45
			8 x 10	8	M	41396	41346	41366-MD	32	1.120	991011	48
MG-CPM-05	Wieland, Telemecanique, Omron, Legrand clamp, Merlin Gerin MCB ST		5 x 8	5	M	41495			56	1.960	991004	52
			5 x 10	5	S	41490		41460-MD	56	1.960	991004	51
			5 x 10	5	M	41494			56	1.960	991004	51
MG-CPM-06	Siemens 8WA clamp		5 x 10	6	S	41591		41561-MD	44	1.540	991005	61
MG-CPM-07	Phoenix Contact ST, STU, STS, STI, STN, STTB, Omron, Siemens 8WH clamp, Schlegel		3 x 10	3,5	S	41692			80	2.000	991011	73
			5 x 10	5,2	S	41691		41661-MD	48	1.680	991011	71
					M	41693			48	1.680	991011	71
MG-CPM-09	Legrand Viking 3		5 x 10	5 ÷ 6	MF	41890		41860-MD	56	1.960	991013	92
MG-CPM-10	Cabur, Connectwell		5 x 10	5,5	S	46194			48	1.680	991006N	100
			5 x 12	5,5	S	46192		46162-MD	48	1.680	991006N	101
MG-CPM-11	Allen Bradley, Weidmüller WDU, Conta Clip RK, IMO, Finder, Omron, Klemsan		6 x 12	6,1	S	46392	46342	46362-MD	48	1.344	991011	106
MG-CPM-12	CEMBRE, Wago Top Job, Entrelec, Cabur, Weidmüller, Connectwell, Morsettitalia, Beckoff I/O, Klemsan		4,2 x 6	5 ÷ 6	MF	46391			56	1.960	991004	111
			4,2 x 9	5 ÷ 6	MF	46390		46360-MD	56	1.960	991004	112
MG-CPM-13	Entrelec SNK ZS		5 x 12	5,2	M	41790	41740	41760-MD	56	1.960	991016	113
			6 x 12	6	M	41791	41741	41761-MD	48	1.680	991016	114
MG-CPM-15	CEMBRE, Allen Bradley, Weidmüller, Wago Top Job, Klemsan, Conta-clip		5 x 5	5,1	M	42908		42608-MD	48	1.680	991554	402
			6 x 5	6,1	M	42909			40	1.400	991556	403

# MG-CPM

## MG-CPM

**Material:** Polycarbonate, self extinguishing class V0 according to UL94; the colours white PC10200WH, PC10300WH and yellow PC10400YE are EN 45545-2 approved.

**Operating temperature range:** -40°C to +130°C

## MG-CPM-MD

**NEW**

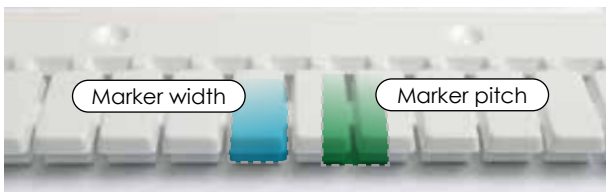
Tags produced in blue metal-detectable material. The material has a specific additive easily detectable by metal detectors and X-rays, which guarantees high resistance to oxidation.

**Material:** PC/ABS, self extinguishing class HB according to UL94

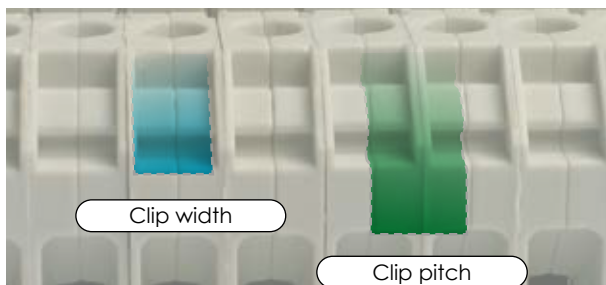
**Operating temperature range:** -40°C to +130°C



PRINTABLE SHEET FORMAT



TERMINAL BLOCKS



MODULAR STRIP **M**

A strip of joined markers is removed from the stem. Without separation, markers are clipped into terminals by light finger pressure. The terminal block is marked quickly and conveniently.



MODULAR FLEXIBLE PITCH STRIP **MF**

A strip of joined markers is removed from the stem. Manually extend the strip length by pulling it until the desired pitch is reached. Clip the strip directly into the terminal blocks by light finger pressure.



SINGLE **S**

Without removal from the stem, markers are clipped into terminals by light finger pressure. Bend the stem upwards to detach it from the markers. Carefully remove the stem, leaving the markers in situ.



CEMBRE		Markers	mm										
		WG-CPM-0102	10x2	WG-CPM-0103	10x3	WG-CPM-0104	10x4	WG-CPM-0105	10x5	WG-CPM-0106	10x6	WG-CPM-0107	10x7
TBS2-S	P	M											
TBS4	C	M											
TBS4-BU	C	M											
TBS6	C	M											
TBS6-BU	C	M											
TBS10	C	M											
TBS10-BU	C	M											
TBS16	C											S	
TBS25	C											S	
TBS35	C											S	

**C SINGLE CLIPS COMPATIBLE**  
 Marker width < Clip width  
 Marker pitch ≠ Clip pitch

