

Thermal transfer printer for sheet media

on sheet media, plug&play

The MARKINGENIUS®MG4 is an industrial labelling printer designed to offer **high quality and long-lasting printing** for text, logos, electrical symbols, QR codes and all kinds of vector images. Equipped with a **ribbon save system**, a useful function that allows you to consume only the ribbon needed for printing.

Its reliability and robustness mean that the MG4 can be used intensively, making it suitable for all kinds of applications.

The large on-board touch screen enables quick and easy management of print projects.

Each monochrome ribbon can print more than 300,000 MG-TPMF 4x10 mm labels.

MG4 can be used with both a mains power supply and with **CEMBRE CAS Alliance** rechargeable batteries: the machine **can be used in the office, in production and also on site**, right in front of the panel to be wired.

The interchangeable battery, which can power both MG4 and all CEMBRE tools, allows full portability of the printer.



WI-FI



SHARE



TOUCH DISPLAY



USB



APP



STATUS MONITOR



LAN



WI-FI DIRECT

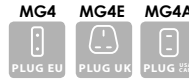


BATTERY RECHARGEABLE

Printer dimensions:

- Length 409 mm
- Width 236 mm
- Height 240 mm
- Weight 6.1 kg

MG4



SPEED

prints 112 4x10 cable tags in less than 12 seconds

CONVENIENCE

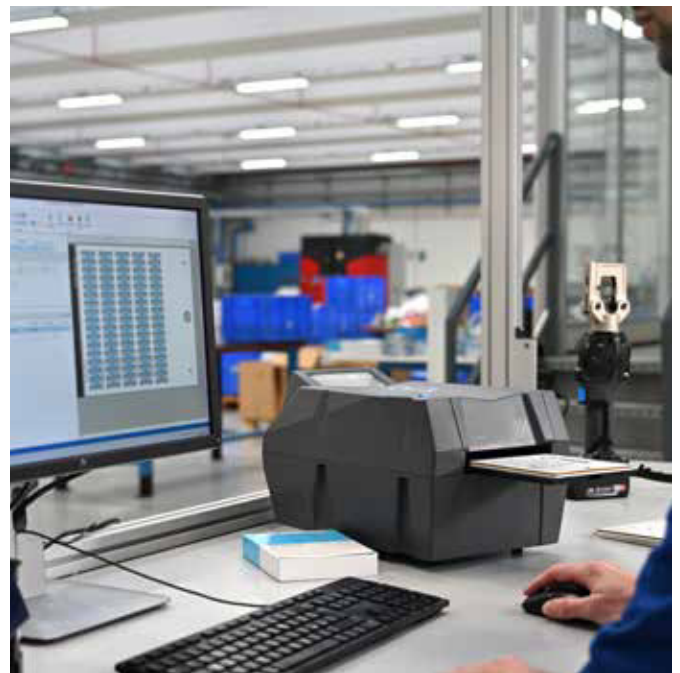
software provides quick and easy upload of the data to be printed

ECONOMY

prints around 300,000 4x10 cable tags with a single ribbon

QUALITY

printer resolution 300x600 dpi



Supplied with the three most useful templates

software GENIUSPRO.....	page 8
templates and PET supports.....	page 12
accessories.....	page 12
ribbons.....	page 13



MG4

Accessories



transport with soft bag **CVB-039**

MG4 printer supplied with:

- **FD-GENIUSPRO** software on *USB stick*
- **991002** plate for *FLAT series products*
- **991000** plate for *tags MG-TPM*
- **991011** plate for *terminal tags*
- **991600** black print ribbon
- **991654** cardboard ribbon spool
- *USB cable*
- *power cord*
- *external power supply*

Accessories on request:

- *rechargeable batteries*
 - **CB1820L** 18V-2.0 Ah Li-Ion
 - **CB1852L** 18V-5.2 Ah Li-Ion
 - **CB1880L** 18V-8. Ah Li-Ion
- *battery chargers*
 - **ASC55-EU** 220-240 V / 50-60 Hz with *EU plug*
 - **ASC55-UK** 220-240 V / 50-60 Hz with *UK plug*
 - **ASC30-36-USA/CA** 115 V / 60 Hz with *USA plug*
 - **ASC30-36-AUS/NZ** 220-240 V / 50-60 Hz with *AUS plug*
- **CVB-039** *soft bag*
- **VAL-MG-N** *rigid trolley*
- **VAL-MG-HD** *HD trolley*

ASC55-EU Battery charger



CB1880L

Prints up to 1000 sheets



CB1852L

Prints up to 700 sheets

CB1820L

Prints up to 350 sheets

