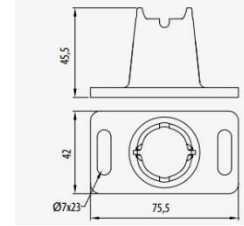


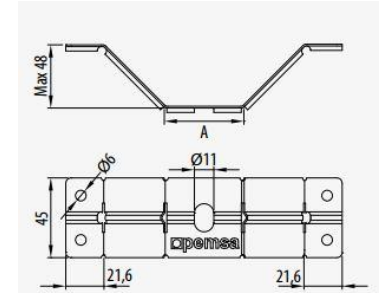
**GOGATRAY Bodenbefestigung Kunststoff / floor fixing plastic**

Material	Gewicht kg/Stk.	max.Traglast (SWL) kg	VPE Stk.	ArtNr	€ /Stk.
material	weight	carrier load	PU		/pc.
Polyamid	0,021	40	100	06-68000060	2,33



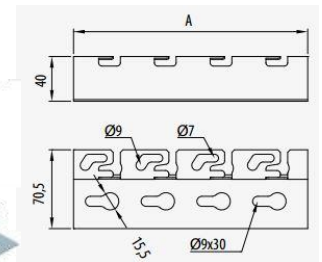
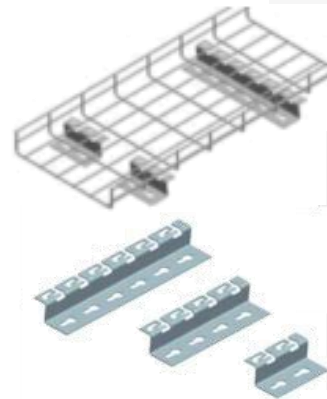
**GOGATRAY Bodenbefestigung Metall / floor fixing metal**

Material	Breite mm	Gewicht kg/Stk.	VPE Stk.	ArtNr	€ /Stk.
material	width	weight	PU		/pc.
P.G.	45	0,04	10	06-67020020	3,10
P.G.	90	0,06	10	06-67020120	3,51
H.D.G.	45	0,04	10	06-67030020	4,99
H.D.G.	90	0,06	10	06-67030120	5,40



**GOGATRAY Bodenkonsolen / floor consoles**

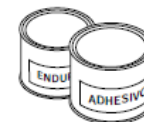
Material	Gewicht kg/Stk.	Breite mm	max.Traglast (SWL) kg	VPE Stk.	ArtNr	€ /Stk.
material	weight	width	carrier load	PU		/pc.
P.G.	0,1	100	250	10	06-67020520	4,69
P.G.	0,2	200		10	06-67020522	5,60
P.G.	0,3	300		10	06-67020524	6,46
H.D.G.	0,1	100		10	06-67030520	5,81
H.D.G.	0,2	200	10	06-67030522	7,37	
H.D.G.	0,4	300	10	06-67030524	8,91	



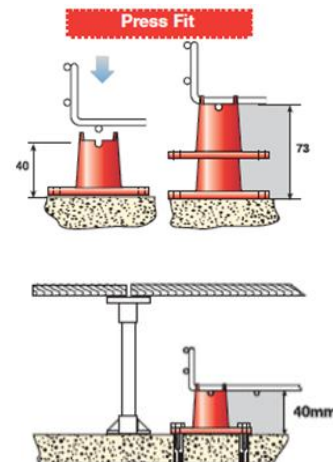
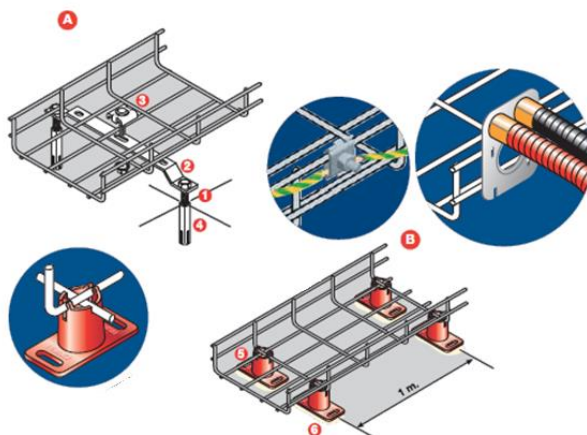
**GOGATRAY Kleber für Bodenbefestigung / glue for floor mounting**

Gewicht kg/Stk.	VPE Stk.	ArtNr	€ /Stk.
weight	PU		/pc.
4	1	06-68000065	a.A.

a. A. = auf Anfrage / upon request



Besteht aus Kleber + Härter



Preise gültig ab 01.01.2023 excl. MwSt., freibleibend, Auftragsrabatt auf Anfrage /  
prices are valid from 01.01.2023 excl. VAT, subject to change, discounts upon request  
sonst. Konditionen siehe [www.gogatec.com/AGB.pdf](http://www.gogatec.com/AGB.pdf), techn. Änderungen vorbehalten /  
terms & conditions can be found on our website: [www.gogatec.com/AGB.pdf](http://www.gogatec.com/AGB.pdf); error, technical modifications and variations are reserved