

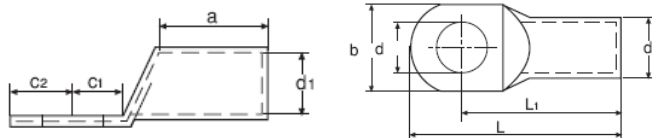




**GOGAPIN KSDIN-RK Presskabelschuh uniso. 240-1000 mm² /  
uninsulated compression cable lugs**

Material / material: E-CU gal Sn. Rohr nach DIN 40500 /  
E-CU tube tin-plated acc. DIN 40500

Zulassung / approval: UL listed  
Normen / standards: DIN 46235



Passende Werkzeuge siehe GOGATOOL Katalog / for appropriate tools please see GOGATOOL catalog

mm² range	Loch für hole	Wk DIN	d	d1	d2	Abmessung mm dimensions mm						Gew./100Stk. kg weight/100pcs.	VPE Stk. PU	Typ type	ArtNr	€/100 Stk. /100 pcs.
240	M10	28	11,0	21,5	29,0	92,0	40,0	42,0	16,0	16,0	26,48	10	KSDIN-RK-240-M10	126010240010	1 497,00	
	M12		13,0	21,5	29,0	92,0	40,0	42,0	16,0	17,0	27,50	10	KSDIN-RK-240-M12	126010240012	1 497,00	
	M14		15,0	21,5	29,0	92,0	40,0	42,0	19,0	20,0	28,30	10	KSDIN-RK-240-M14	126010240014	1 497,00	
	M16		17,0	21,5	29,0	92,0	40,0	42,0	16,0	20,0	27,50	10	KSDIN-RK-240-M16	126010240016	1 497,00	
	M20		21,0	21,5	29,0	92,0	40,0	42,0	16,0	22,0	27,60	10	KSDIN-RK-240-M20	126010240020	1 497,00	
300	M16	32	17,0	24,5	32,0	100,0	50,0	48,0	19,0	22,0	34,00	10	KSDIN-RK-300-M16	126010300016	1 946,00	
	M20		21,0	24,5	32,0	100,0	50,0	48,0	22,0	22,0	33,80	10	KSDIN-RK-300-M20	126010300020	1 946,00	
400	M12	38	13,0	27,5	8,5	115,0	70,0	55,0	25,0	25,0	69,50	8	KSDIN-RK-400-M12	126010400012	3 460,00	
	M14		15,0	27,5	38,5	115,0	70,0	55,0	25,0	25,0	69,40	8	KSDIN-RK-400-M14	126010400014	a.A.	
	M16		17,0	27,5	38,5	115,0	70,0	55,0	25,0	25,0	67,50	8	KSDIN-RK-400-M16	126010400016	3 742,00	
	M20		21,0	27,5	38,5	115,0	70,0	55,0	25,0	25,0	69,40	8	KSDIN-RK-400-M20	126010400020	4 870,00	
500	M16	42	17,0	31,0	42,0	125,0	70,0	60,0	25,0	25,0	83,00	4	KSDIN-RK-500-M16	126010500016	4 640,00	
	M20		21,0	31,0	42,0	125,0	70,0	60,0	25,0	25,0	83,00	4	KSDIN-RK-500-M20	126010500020	4 640,00	
625	M16	44	17,0	34,5	44,0	135,0	80,0	64,0	25,0	25,0	79,60	4	KSDIN-RK-625-M16	126010625016	4 789,00	
	M20		21,0	34,5	44,0	135,0	80,0	64,0	25,0	25,0	79,00	4	KSDIN-RK-625-M20	126010625020	4 789,00	
800	M16	52	17,0	40,0	52,0	165,0	100,0	75,0	30,0	30,0	150,00	1	KSDIN-RK-800-M16	126010800016	a.A.	
	M20		21,0	40,0	52,0	165,0	100,0	75,0	30,0	30,0	150,00	1	KSDIN-RK-800-M20	126010800020	a.A.	
1000	M20	58	21,0	44,0	58,0	165,0	100,0	85,0	30,0	30,0	199,00	1	KSDIN-RK-1000-M20	126010999020	a.A.	

a. A. = auf Anfrage / upon request

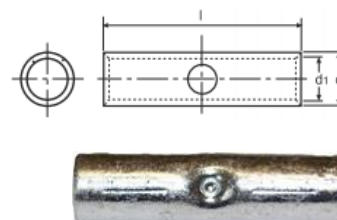
**GOGAPIN KSE-SVDIN Pressverbinder unisoliert / uninsulated compression joints**

Material / material: E-CU gal Sn. Rohr nach DIN 40500 / E-CU tube tin-plated acc. DIN 40500

Normen / standards: teilweise / partly DIN 46267

Passende Werkzeuge siehe GOGATOOL Katalog / for appropriate tools please see GOGATOOL catalog

mm² range	Abmessung mm dimensions mm			Gewicht/100Stk. kg weight/100 pcs.	VPE Stk. PU	Typ type	ArtNr	€/100 Stk. /100 pcs.
6	3,8	5,5	28,5	0,310	100	KSDIN-SV-6	1260800060	67,80
10	4,5	6,0	30,0	0,350	100	KSDIN-SV-10	1260800100	28,81
16	5,5	8,5	50,0	1,450	100	KSDIN-SV-16	1260800160	82,00
25	7,0	10,0	50,0	1,770	100	KSDIN-SV-25	1260800250	101,70
35	8,2	12,5	50,0	2,900	100	KSDIN-SV-35	1260800350	182,00
50	10,0	14,5	56,0	4,260	50	KSDIN-SV-50	1260800500	266,00
70	11,5	16,5	56,0	5,410	50	KSDIN-SV-70	1260800700	305,00
95	13,5	19,0	70,0	8,700	50	KSDIN-SV-95	1260800950	468,00
120	15,5	21,0	70,0	9,700	50	KSDIN-SV-120	1260801200	515,00
150	17,0	23,5	80,0	14,500	50	KSDIN-SV-150	1260801500	764,00
185	19,0	25,5	85,0	17,000	25	KSDIN-SV-185	1260801850	858,00
240	21,5	29,0	90,0	23,500	25	KSDIN-SV-240	1260802400	1 248,00
300	24,5	32,0	100,0	29,230	25	KSDIN-SV-300	1260803000	2 264,00
400	27,5	38,5	150,0	75,320	10	KSDIN-SV-400	1260804000	3 032,00
500	31,0	42,0	160,0	79,100	5	KSDIN-SV-500	1260805000	6 749,00
625	34,5	44,0	160,0	89,400	5	KSDIN-SV-625	1260806250	6 997,00
800	40,0	52,0	200,0	151,200	3	KSDIN-SV-800	1260808000	10 488,00
1000	44,0	58,0	200,0	198,500	3	KSDIN-SV-1000	1260809990	a.A.



a. A. = auf Anfrage / upon request

Preise gültig ab 01.01.2023 exkl. MwSt., freibleibend, Auftragsrabatt auf Anfrage /  
prices are valid from 01.01.2023 excl. VAT, subject to change, discounts upon request  
sonst. Konditionen siehe [www.gogatec.com/AGB.pdf](http://www.gogatec.com/AGB.pdf), techn. Änderungen vorbehalten /  
terms & conditions can be found on our website: [www.gogatec.com/AGB.pdf](http://www.gogatec.com/AGB.pdf); error, technical modifications and variations are reserved