

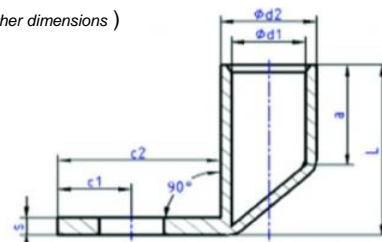
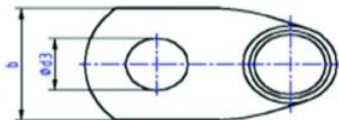
Passende Werkzeuge siehe GOGATOOL Katalog / for appropriate tools please see GOGATOOL catalog

GOGAPIN KSF-RK90 Rohrkabelschuh 90° unisoliert / uninsulated tubular cable lugs 90°

Material / material: E-CU gal Sn. / E-CU tube tin-plated

Zulassung / approval: UL listed

Normen / standards: ähnlich / similar to DIN 46255 (ab 90 mm² andere Abmessungen / from 90 mm² other dimensions)



Für fein- und mehrdrähtige Leiter / for fine and multi-stranded conductors

mm ²	Loch für	Gewicht/100Stk.	Abmessung mm							VPE	Typ	ArtNr	€
range	hole size	weight / 100 pcs.	d1	d2	d3	a	b	c1	c2	Stk. PU	type	/100 pcs.	/100 Stk.
10	M5	0,117	4,5	7,0	5,5	10,0	12,0	6,5	16,5	600	KSF-RK90-10-M5	125011010005	96,60
	M6	0,117	4,5	7,0	6,5	10,0	12,0	6,5	16,5		KSF-RK90-10-M6	125011010006	50,20
	M8	0,125	4,5	7,0	8,5	10,0	15,0	10,0	23,0		KSF-RK90-10-M8	125011010008	50,20
16	M6	0,275	5,5	8,5	6,5	13,0	12,0	7,5	18,5	400	KSF-RK90-16-M6	125011016006	79,00
	M8	0,288	5,5	8,5	8,5	13,0	15,0	10,0	23,0		KSF-RK90-16-M8	125011016008	79,00
	M10	0,300	5,5	8,5	10,5	13,0	17,0	12,0	27,0		KSF-RK90-16-M10	125011016010	146,40
25	M6	0,600	7,0	10,0	6,5	15,0	14,0	7,5	18,5	250	KSF-RK90-25-M6	125011025006	113,90
	M8	0,612	7,0	10,0	8,5	15,0	16,0	10,0	23,0		KSF-RK90-25-M8	125011025008	113,90
	M10	0,660	7,0	10,0	10,5	15,0	18,0	12,0	27,0		KSF-RK90-25-M10	125011025010	127,00
35	M6	1,900	8,5	12,0	6,5	17,0	17,0	7,5	18,5	150	KSF-RK90-35-M6	125011035006	168,00
	M8	1,900	8,5	12,0	8,5	17,0	17,0	10,0	23,0		KSF-RK90-35-M8	125011035008	168,00
	M10	1,900	8,5	12,0	10,5	17,0	19,0	12,0	27,0		KSF-RK90-35-M10	125011035010	201,00
50	M6	4,000	10,0	14,0	6,5	19,0	20,0	10,0	23,0	90	KSF-RK90-50-M6	125011050006	265,00
	M8	4,000	10,0	14,0	8,5	19,0	20,0	10,0	23,0		KSF-RK90-50-M8	125011050008	265,00
	M10	4,000	10,0	14,0	10,5	19,0	20,0	12,0	28,0		KSF-RK90-50-M10	125011050010	259,00
70	M8	7,692	12,0	16,5	8,5	21,0	23,0	10,0	24,0	65	KSF-RK90-70-M8	125011070008	309,00
	M10	7,692	12,0	16,5	10,5	21,0	23,0	12,0	28,0		KSF-RK90-70-M10	125011070010	309,00
95	M8	12,100	13,5	18,0	8,5	25,0	26,0	12,0	26,0	50	KSF-RK90-95-M8	125011095008	366,00
	M10	12,100	13,5	18,0	10,5	25,0	26,0	12,0	29,0		KSF-RK90-95-M10	125011095010	366,00
120	M10	17,625	15,0	19,5	10,5	26,0	28,0	14,0	31,0	40	KSF-RK90-120-M10	125011120010	457,00
	M12	17,625	15,0	19,5	13,0	26,0	28,0	14,0	32,0		KSF-RK90-120-M12	125011120012	457,00
150	M10	27,334	16,5	21,0	10,5	30,0	31,0	14,0	31,0	30	KSF-RK90-150-M10	125011150010	539,00
	M12	27,334	16,5	21,0	13,0	30,0	31,0	15,0	33,0		KSF-RK90-150-M12	125011150012	539,00
185	M10	41,167	19,0	24,0	10,5	30,0	35,0	18,0	40,0	30	KSF-RK90-185-M10	125011185010	771,00
	M12	41,167	19,0	24,0	13,0	30,0	35,0	18,0	40,0		KSF-RK90-185-M12	125011185012	771,00
240	M10	54,800	21	26	11	35,00	39,00	21,50	43,50	25	KSF-RK90-240-M10	125011240010	883,00
	M12	54,800	21	26	13	35,00	39,00	21,50	43,50		KSF-RK90-240-M12	125011240012	883,00

Preise gültig ab 01.01.2023 exkl. MwSt., freibleibend, Auftragsrabatt auf Anfrage /

prices are valid from 01.01.2023 excl. VAT, subject to change, discounts upon request

sonst. Konditionen siehe www.gogatec.com/AGB.pdf, techn. Änderungen vorbehalten /

terms & conditions can be found on our website: www.gogatec.com/AGB.pdf; error, technical modifications and variations are reserved

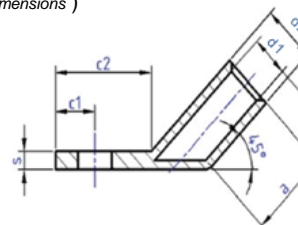
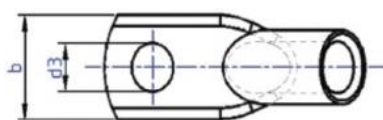
Passende Werkzeuge siehe GOGATOOL Katalog / for appropriate tools please see GOGATOOL catalog

GOGAPIN KSF-RK45 Rohrkabelschuh 45° unisoliert / uninsulated tubular cable lugs 45°

Material: E-CU gal Sn. / E-CU tube tin-plated

Zulassung / approval: UL listed

Normen / standards: ähnlich / similar to DIN 46235 (ab 90 mm² andere Abmessungen / from 90 mm² other dimensions)



Für fein- und mehrdrähtige Leiter / for fine and multi-stranded conductors

mm ²	Loch für	Gewicht/100Stk.	Abmessung mm							VPE	Typ	ArtNr	€
range	hole size	weight / 100 pcs.	d1	d2	d3	a	b	c1	c2	Stk. PU	type	/100 Stk.	/100 pcs.
10	M5	0,117	4,5	7,0	5,5	10,0	12,0	6,5	16,5	600	KSF-RK45-10-M5	125012010005	50,20
	M6	0,117	4,5	7,0	6,5	10,0	12,0	6,5	16,5		KSF-RK45-10-M6	125012010006	50,20
	M8	0,125	4,5	7,0	8,5	10,0	15,0	10,0	23,0		KSF-RK45-10-M8	125012010008	50,20
16	M6	0,275	5,5	8,5	6,5	13,0	12,0	7,5	18,5	400	KSF-RK45-16-M6	125012016006	79,00
	M8	0,288	5,5	8,5	8,5	13,0	15,0	10,0	23,0		KSF-RK45-16-M8	125012016008	79,00
	M10	0,300	5,5	8,5	10,5	13,0	17,0	12,0	27,0		KSF-RK45-16-M10	125012016010	a.A.
25	M6	0,600	7,0	10,0	6,5	15,0	14,0	7,5	18,5	250	KSF-RK45-25-M6	125012025006	113,90
	M8	0,612	7,0	10,0	8,5	15,0	16,0	10,0	23,0		KSF-RK45-25-M8	125012025008	113,90
	M10	0,660	7,0	10,0	10,5	15,0	18,0	12,0	27,0		KSF-RK45-25-M10	125012025010	127,00
35	M6	1,900	8,5	12,0	6,5	17,0	17,0	7,5	18,5	150	KSF-RK45-35-M6	125012035006	168,00
	M8	1,900	8,5	12,0	8,5	17,0	17,0	10,0	23,0		KSF-RK45-35-M8	125012035008	168,00
	M10	1,900	8,5	12,0	10,5	17,0	19,0	12,0	27,0		KSF-RK45-35-M10	125012035010	201,00
50	M6	4,000	10,0	14,0	6,5	19,0	20,0	10,0	23,0	90	KSF-RK45-50-M6	125012050006	a.A.
	M8	4,000	10,0	14,0	8,5	19,0	20,0	10,0	23,0		KSF-RK45-50-M8	125012050008	265,00
	M10	4,000	10,0	14,0	10,5	19,0	20,0	12,0	28,0		KSF-RK45-50-M10	125012050010	a.A.
70	M8	7,692	12,0	16,5	8,5	21,0	23,0	10,0	24,0	65	KSF-RK45-70-M8	125012070008	474,00
	M10	7,692	12,0	16,5	10,5	21,0	23,0	12,0	28,0		KSF-RK45-70-M10	125012070010	309,00
95	M8	12,100	13,5	18,0	8,5	25,0	26,0	12,0	26,0	50	KSF-RK45-95-M8	125012095008	366,00
	M10	12,100	13,5	18,0	10,5	25,0	26,0	12,0	29,0		KSF-RK45-95-M10	125012095010	366,00
120	M10	17,625	15,0	19,5	10,5	26,0	28,0	14,0	31,0	40	KSF-RK45-120-M10	125012120010	457,00
	M12	17,625	15,0	19,5	13,0	26,0	28,0	14,0	32,0		KSF-RK45-120-M12	125012120012	457,00
150	M10	27,334	16,5	21,0	10,5	30,0	31,0	14,0	31,0	30	KSF-RK45-150-M10	125012150010	539,00
	M12	27,334	16,5	21,0	13,0	30,0	31,0	15,0	33,0		KSF-RK45-150-M12	125012150012	539,00
185	M10	41,167	19,0	24,0	10,5	30,0	35,0	18,0	40,0	30	KSF-RK45-185-M10	125012185010	771,00
	M12	41,167	19,0	24,0	13,0	30,0	35,0	18,0	40,0		KSF-RK45-185-M12	125012185012	771,00
240	M10	54,800	21,0	26	11,0	35,00	39,00	21,50	43,50	25	KSF-RK45-240-M10	125012240010	883,00
	M12	54,800	21,0	26	13,0	35,00	39,00	21,50	43,50		KSF-RK45-240-M12	125012240012	883,00

a. A. = auf Anfrage / upon request

Preise gültig ab 01.01.2023 exkl. MwSt., freibleibend, Auftragsrabatt auf Anfrage /

prices are valid from 01.01.2023 excl. VAT, subject to change, discounts upon request

sonst. Konditionen siehe www.gogatec.com/AGB.pdf, techn. Änderungen vorbehalten /

terms & conditions can be found on our website: www.gogatec.com/AGB.pdf; error, technical modifications and variations are reserved