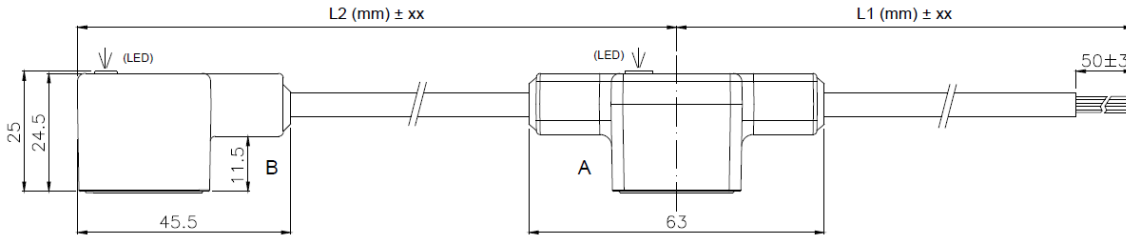
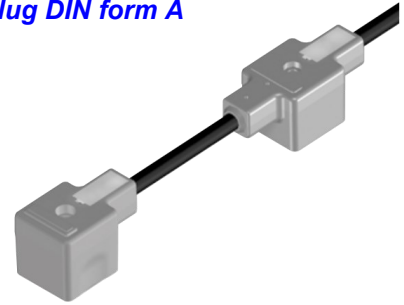


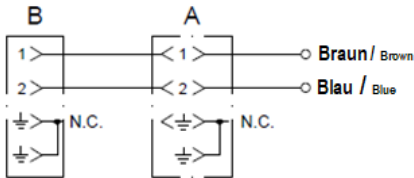
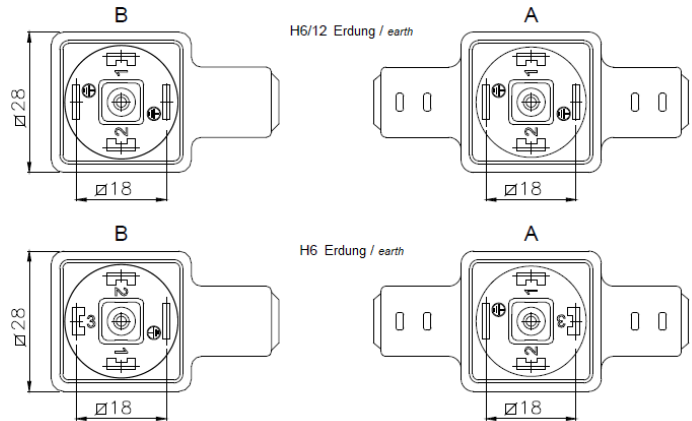
GOGAPLUG Doppelventilstecker DIN Bauform A / double valve plug DIN form A

Material Gehäuse / material enclosure cable connector: PUR
 Verschlussystem / locking system: mit M3 Schraube / with screw M3
 Nennspannung / nominal voltage: 250V
 Nennstrom / nominal current: 10 A
 Isolationswiderstand / isolation resistance: $\geq 10^9 \Omega$
 Kontaktwiderstand / contact resistance: max. 4 m Ω
 Temperaturbereich / temperature range: -25°C - +80°C
 Zulassungen / approvals: EN 175301-803 (EX DIN 43650)
 Schutzart / protection grade: IP 67 – IP68

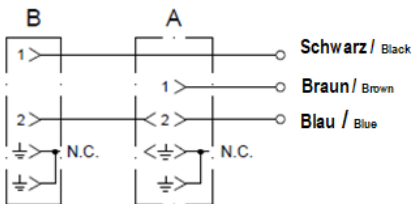


Type	Anzahl Pole	Anzahl Drähte	ArtNr PVC-Leitung	€/Stk.
type	num. of poles	num. of wires	PVC-wire	/pc.
STD	3	4	S2AZ0300-L2-L1-054	a.A.
2	2	2	S2AZ0200-L2-L1-053	a.A.
3	2	3	S2AZ0200-L2-L1-020	a.A.
4	3	3	S2AZ0300-L2-L1-055	a.A.
5	3	5	S2AZ0300-L2-L1-024	a.A.
6	3	5	S2AZA500-L2-L1-022	a.A.

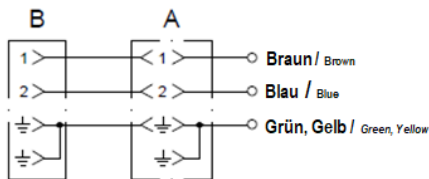
a. A. = auf Anfrage / upon request



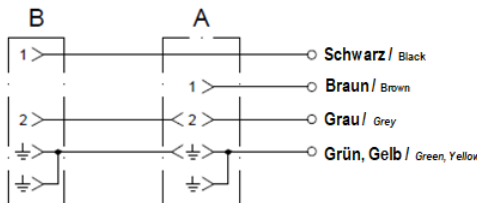
Typ / type : 2



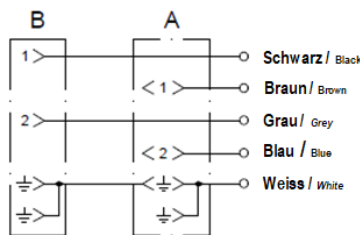
Typ / type : 3



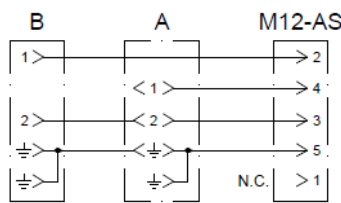
Typ / type : 4



Typ / type : STD



Typ / type : 5

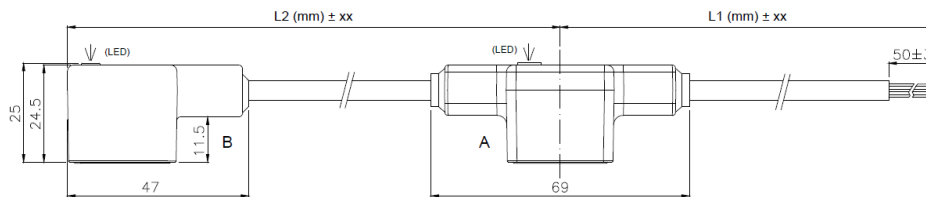
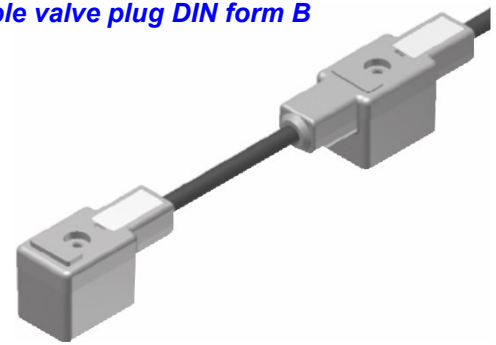


Typ / type : 6

Preise gültig ab 01.01.2025 exkl. MwSt., freibleibend, Auftragsrabatt auf Anfrage /
 prices are valid from 01.01.2025 excl. VAT, subject to change, discounts upon request
 sonst. Konditionen siehe www.gogatec.com/AGB.pdf, techn. Änderungen vorbehalten /
 terms & conditions can be found on our website: www.gogatec.com/AGB.pdf; error, technical modifications and variations are reserved

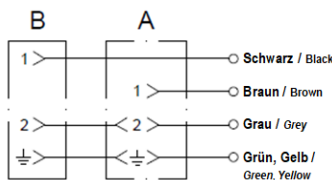
GOGAPLUG Doppelventilstecker DIN Bauform B / double valve plug DIN form B

Material Gehäuse / material enclosure cable connector: PUR
 Verschlussystem / locking system: mit M3 Schraube / with screw M3
 Nennspannung / nominal voltage: 250V
 Nennstrom / nominal current: 10 A
 Isolationswiderstand / isolation resistance: $\geq 10^9 \Omega$
 Kontaktwiderstand / contact resistance: max. 4 m Ω
 Steckzyklen / plugging cycles: max. 1.000
 Zulassungen / approvals: EN 175301-803 (EX DIN 43650)
 Schutzart / protection grade: IP 67 – IP68
 Temperaturbereich / temperature range: -25°C - +80°C

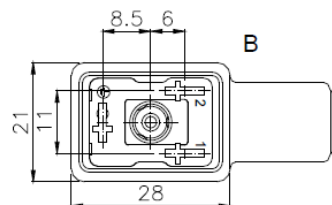


Type	Anzahl Pole	Anzahl Drähte	ArtNr	€	ArtNr	€
type	num. of poles	num. of wires	H6 Version	/Stk.	H12 Version	/Stk.
			H6 version	/pc.	H12 version	/pc.
STD	3	4	S2BB0300-L2-L1-055	a.A.	S2BD0300-L2-L1-055	a.A.
2	2	2	S2BB0200-L2-L1-053	a.A.	S2BD0200-L2-L1-053	a.A.
3	2	3	S2BB0200-L2-L1-020	a.A.	S2BD0200-L2-L1-020	a.A.
4	3	3	S2BB0300-L2-L1-054	a.A.	S2BD0300-L2-L1-054	a.A.
5	3	5	S2BBA500-L2-L1-022	a.A.	S2BDA500-L2-L1-022	a.A.

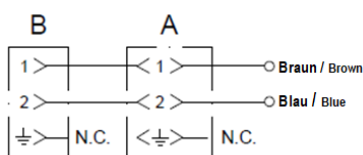
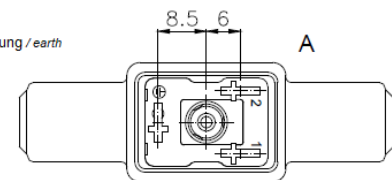
a. A. = auf Anfrage / upon request



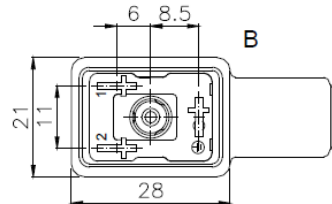
Typ / type : STD



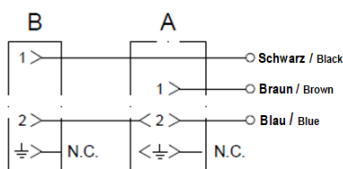
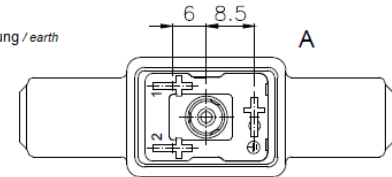
H12 Erdung / earth



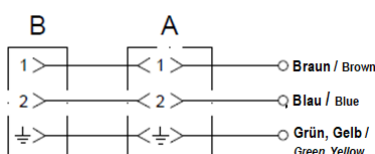
Typ / type : 2



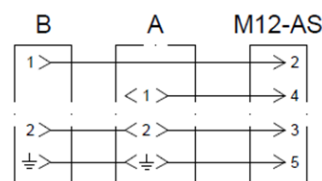
H6 Erdung / earth



Typ / type : 3



Typ / type : 4



Typ / type : 5

Preise gültig ab 01.01.2025 exkl. MwSt., freibleibend, Auftragsrabatt auf Anfrage /
 prices are valid from 01.01.2025 excl. VAT, subject to change, discounts upon request
 sonst. Konditionen siehe www.gogatec.com/AGB.pdf, techn. Änderungen vorbehalten /
 terms & conditions can be found on our website: www.gogatec.com/AGB.pdf; error, technical modifications and variations are reserved