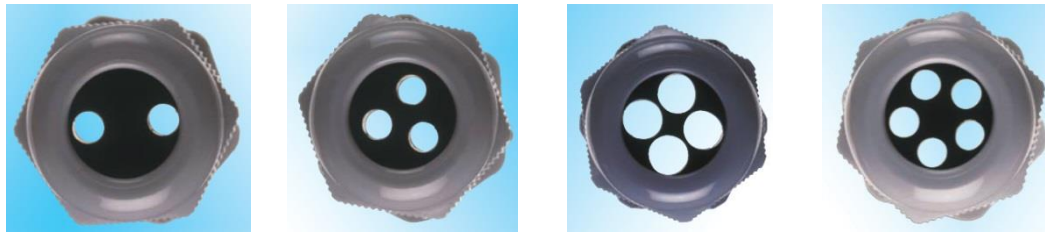
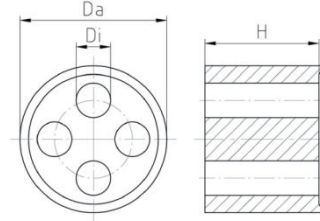


Die GOGAFIX Mehrfach-Dichteinsätze sind für die Durchführung mehrerer Kabel mit gleichem Durchmesser durch eine Verschraubung geeignet. /
 GOGAFIX multiple sealing inserts are suitable for the implementation of several cables of the same diameter through a cable gland.

GOGAFIX MFD Dichteinsatz metrisch / sealing insert metric

Material: Evoprene (TPE)
Temperaturbereich / temperature range: -30°C - +100°C
Gewicht / weight: auf Anfrage / upon request



| Type | Anschluss- gew inde | Anzahl Löcher | Innen-Ø mm Di | Außen-Ø mm Da | Höhe mm | VPE Stk. | ArtNr | € /Stk. |
|-----------|------------------------|------------------|------------------|------------------|------------|-------------|-------------|------------|
| type | thread size | number of holes | inside-Ø | outside-Ø | height | PU | | /pc. |
| M12/2x1,6 | M12 | 2 | 1,6 | 8,5 | 6,6 | 100 | 2340812X16 | 0,50 |
| M12/3x2,3 | M12 | 3 | 2,3 | 8,5 | 6,6 | 100 | 2340813X23 | 0,50 |
| M12/4x2 | M12 | 4 | 2 | 8,5 | 6,6 | 100 | 2340814X20 | 0,50 |
| M16/2x4 | M16 | 2 | 4 | 11,7 | 7,6 | 100 | 2340822X40 | 0,52 |
| M16/2x4,5 | M16 | 2 | 4,5 | 11,7 | 7,6 | 100 | 2340822X45 | 0,52 |
| M16/4x3,5 | M16 | 4 | 3,5 | 11,7 | 7,6 | 100 | 2340824X35 | 0,52 |
| M20/2x4 | M20 | 2 | 4 | 15,1 | 7,5 | 100 | 2340832X40 | 0,58 |
| M20/2x6 | M20 | 2 | 6 | 15,1 | 7,5 | 100 | 2340832X60 | 0,58 |
| M20/4x5 | M20 | 4 | 5 | 15,1 | 7,5 | 100 | 2340834X50 | 0,58 |
| M25/2x6 | M25 | 2 | 6 | 19,8 | 9,3 | 50 | 2340842X60 | 0,77 |
| M25/2x8 | M25 | 2 | 8 | 19,8 | 9,3 | 50 | 2340842X80 | 0,77 |
| M25/3x4 | M25 | 3 | 4 | 19,8 | 9,3 | 50 | 2340843X40 | 0,77 |
| M25/3x6 | M25 | 3 | 6 | 19,8 | 9,3 | 50 | 2340843X60 | 0,77 |
| M25/3x7 | M25 | 3 | 7 | 19,8 | 9,3 | 50 | 2340843X70 | 0,77 |
| M25/4x5 | M25 | 4 | 5 | 19,8 | 9,3 | 50 | 2340844X50 | 0,77 |
| M25/4x6 | M25 | 4 | 6 | 19,8 | 9,3 | 50 | 2340844X60 | 0,77 |
| M25/4x6,5 | M25 | 4 | 6,5 | 19,8 | 9,3 | 50 | 2340844X65 | 0,77 |
| M25/5x4 | M25 | 5 | 4 | 19,8 | 9,3 | 50 | 2340845X40 | 0,77 |
| M25/6x4 | M25 | 6 | 4 | 19,8 | 9,3 | 50 | 2340846X40 | 0,77 |
| M32/2x8 | M32 | 2 | 8 | 25,1 | 12,5 | 50 | 2340852X80 | 1,50 |
| M32/3x8 | M32 | 3 | 8 | 25,1 | 12,5 | 50 | 2340853X80 | 1,50 |
| M32/4x7 | M32 | 4 | 7 | 25,1 | 12,5 | 50 | 2340854X70 | 1,50 |
| M32/4x8 | M32 | 4 | 8 | 25,1 | 12,5 | 50 | 2340854X80 | 1,50 |
| M32/4x8,5 | M32 | 4 | 8,5 | 25,1 | 12,5 | 50 | 2340854X85 | 1,50 |
| M32/6x4 | M32 | 6 | 4 | 25,1 | 12,5 | 50 | 2340856X40 | 1,50 |
| M32/6x6 | M32 | 6 | 6 | 25,1 | 12,5 | 50 | 2340856X60 | 1,50 |
| M40/4x10 | M40 | 4 | 10 | 32,3 | 15 | 10 | 2340864X100 | 1,93 |
| M40/5x8,5 | M40 | 5 | 8,5 | 32,3 | 15 | 10 | 2340865X85 | 1,93 |
| M40/8x6,5 | M40 | 8 | 6,5 | 32,3 | 15 | 10 | 2340868X65 | 1,93 |

Preise gültig ab 01.01.2023 exkl. MwSt., freibleibend, Auftragsrabatt auf Anfrage /
 prices are valid from 01.01.2023 excl. VAT, subject to change, discounts upon request
 sonst. Konditionen siehe www.gogatec.com/AGB.pdf, techn. Änderungen vorbehalten /
 terms & conditions can be found on our website: www.gogatec.com/AGB.pdf; error, technical modifications and variations are reserved

Die GOGAFIX Mehrfach-Dichteinsätze sind für die Durchführung mehrerer Kabel mit gleichem Durchmesser durch eine Verschraubung geeignet. /

GOGAFIX multiple sealing inserts are suitable for the implementation of several cables of the same diameter through a cable gland.

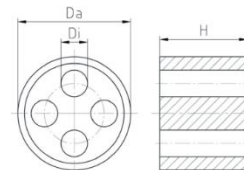
GOGAFIX MFD Dichteinsatz PG / sealing insert PG

ODER metrische Kabelverschraubungen mit erweitertem Klemmbereich /
OR metric cable glands with enlarged clamping range

Material: Evoprene (TPE)

Temperaturbereich / temperature range: -30°C - +100°C

Gewicht / weight: auf Anfrage / upon request



| Typ type | Anschluss- gew inde thread size | Anschluss- gew inde KE thread size | Anzahl Löcher number of holes | Innen-Ø mm Di inside-Ø | Außen-Ø mm Da outside-Ø | Höhe mm height | VPE Stk. PU | ArtNr | € /Stk. /pc. |
|--------------|---------------------------------------|--|-------------------------------------|------------------------------|-------------------------------|----------------------|-------------------|------------|--------------------|
| PG9/2x3 | PG9 | - | 2 | 3 | 10,6 | 7,5 | 100 | 2340912X30 | 0,48 |
| PG9/2x3,5 | PG9 | - | 2 | 3,5 | 10,6 | 7,5 | 100 | 2340912X35 | 0,48 |
| PG9/3x2 | PG9 | - | 3 | 2 | 10,6 | 7,5 | 100 | 2340913X20 | 0,48 |
| PG9/3x3,5 | PG9 | - | 3 | 3,5 | 10,6 | 7,5 | 100 | 2340913X35 | 0,49 |
| PG9/4x2 | PG9 | - | 4 | 2 | 10,6 | 7,5 | 100 | 2340914X20 | 0,48 |
| PG9/4x3 | PG9 | - | 4 | 3 | 10,6 | 7,5 | 100 | 2340914X30 | 0,48 |
| PG11/2x3 | PG11 | - | 2 | 3 | 13,3 | 8,5 | 100 | 2340922X30 | 0,54 |
| PG11/2x4 | PG11 | - | 2 | 4 | 13,3 | 8,5 | 100 | 2340922X40 | 0,56 |
| PG11/2x4,5 | PG11 | - | 2 | 4,5 | 13,3 | 8,5 | 100 | 2340922X45 | 0,54 |
| PG11/2x5 | PG11 | - | 2 | 5 | 13,3 | 8,5 | 100 | 2340922X50 | 0,54 |
| PG11/3x3 | PG11 | - | 3 | 3 | 13,3 | 8,5 | 100 | 2340923X30 | 0,54 |
| PG11/3x4 | PG11 | - | 3 | 4 | 13,3 | 8,5 | 100 | 2340923X40 | 0,54 |
| PG11/3x5 | PG11 | - | 3 | 5 | 13,3 | 8,5 | 100 | 2340923X50 | 0,54 |
| PG11/4x3 | PG11 | - | 4 | 3 | 13,3 | 8,5 | 100 | 2340924X30 | 0,54 |
| PG13,5/2x4,5 | PG13,5 | M20 | 2 | 4,5 | 15,3 | 8,5 | 50 | 2340932X45 | 0,60 |
| PG13,5/2x5 | PG13,5 | M20 | 2 | 5 | 15,3 | 8,5 | 50 | 2340932X50 | 0,63 |
| PG13,5/2x6 | PG13,5 | M20 | 2 | 6 | 15,3 | 8,5 | 50 | 2340932X60 | 0,60 |
| PG13,5/3x4 | PG13,5 | M20 | 3 | 4 | 15,3 | 8,5 | 50 | 2340933X40 | 0,60 |
| PG13,5/3x5 | PG13,5 | M20 | 3 | 5 | 15,3 | 8,5 | 50 | 2340933X50 | 0,60 |
| PG16/2x4 | PG16 | M20 | 2 | 4 | 17,4 | 9 | 50 | 2340942X40 | 0,58 |
| PG16/2x6 | PG16 | M20 | 2 | 6 | 17,4 | 9 | 50 | 2340942X60 | 0,58 |
| PG16/3x4 | PG16 | M20 | 3 | 4 | 17,4 | 9 | 50 | 2340943X40 | 0,58 |
| PG16/3x4,5 | PG16 | M20 | 3 | 4,5 | 17,4 | 9 | 50 | 2340943X45 | 0,58 |
| PG16/3x5 | PG16 | M20 | 3 | 5 | 17,4 | 9 | 50 | 2340943X50 | 0,58 |
| PG16/3x6 | PG16 | M20 | 3 | 6 | 17,4 | 9 | 50 | 2340943X60 | 0,58 |
| PG16/3x6,5 | PG16 | M20 | 3 | 6,5 | 17,4 | 9 | 50 | 2340943X65 | 0,58 |
| PG16/3x7 | PG16 | M20 | 3 | 7 | 17,4 | 9 | 50 | 2340943X70 | 0,58 |
| PG16/4x4 | PG16 | M20 | 4 | 4 | 17,4 | 9 | 50 | 2340944X40 | 0,58 |
| PG16/4x5 | PG16 | M20 | 4 | 5 | 17,4 | 9 | 50 | 2340944X50 | 0,58 |
| PG16/5x4 | PG16 | M20 | 5 | 4 | 17,4 | 9 | 50 | 2340945X40 | 0,58 |
| PG21/2x7 | PG21 | M25 | 2 | 7 | 22,2 | 11 | 25 | 2340952X70 | 0,77 |
| PG21/2x8 | PG21 | M25 | 2 | 8 | 22,2 | 11 | 25 | 2340952X80 | 0,77 |
| PG21/2x9 | PG21 | M25 | 2 | 9 | 22,2 | 11 | 25 | 2340952X90 | 0,77 |
| PG21/3x7 | PG21 | M25 | 3 | 7 | 22,2 | 11 | 25 | 2340953X70 | 0,77 |
| PG21/3x8 | PG21 | M25 | 3 | 8 | 22,2 | 11 | 25 | 2340953X80 | 0,77 |
| PG21/4x5 | PG21 | M25 | 4 | 5 | 22,2 | 11 | 25 | 2340954X50 | 0,77 |
| PG21/4x6,5 | PG21 | M25 | 4 | 6,5 | 22,2 | 11 | 25 | 2340954X65 | 0,77 |
| PG21/4x7 | PG21 | M25 | 4 | 7 | 22,2 | 11 | 25 | 2340954X70 | 0,77 |
| PG21/4x7,5 | PG21 | M25 | 4 | 7,5 | 22,2 | 11 | 25 | 2340954X75 | 0,77 |
| PG21/5x5 | PG21 | M25 | 5 | 5 | 22,2 | 11 | 25 | 2340955X50 | 0,77 |
| PG29/5x8,5 | PG29 | M32 | 5 | 8,5 | 29,8 | 13 | 25 | 2340965X85 | 1,50 |
| PG29/6x5 | PG29 | M32 | 6 | 5 | 29,8 | 13 | 25 | 2340966X50 | 1,50 |
| PG29/6x7,5 | PG29 | M32 | 6 | 7,5 | 29,8 | 13 | 25 | 2340966X75 | 1,50 |
| PG29/8x5 | PG29 | M32 | 8 | 5 | 29,8 | 13 | 25 | 2340968X50 | 1,50 |
| PG36/12+15 | PG36 | M40 | 2 | 12+15 | 40 | 16,8 | 25 | 2340971215 | a.A. |
| PG36/5x9 | PG36 | M40 | 5 | 9 | 40 | 16,8 | 25 | 2340975X90 | 1,93 |



a. A. = auf Anfrage / upon request

Preise gültig ab 01.01.2023 exkl. MwSt., freibleibend, Auftragsrabatt auf Anfrage /

prices are valid from 01.01.2023 excl. VAT, subject to change, discounts upon request

sonst. Konditionen siehe www.gogatec.com/AGB.pdf, techn. Änderungen vorbehalten /

terms & conditions can be found on our website: www.gogatec.com/AGB.pdf; error, technical modifications and variations are reserved